



**BLUE RIDGE  
PARKWAY  
FOUNDATION**

# 25 YEARS OF PROTECTING THE PARKWAY

**2021-2022 ANNUAL REPORT**

# CELEBRATING 25 YEARS

Last year, the Blue Ridge Parkway Foundation marked 25 years as the nonprofit fundraising partner for the Blue Ridge Parkway, providing support for natural resource protection, historical and cultural preservation, visitor amenities, and education and outreach.

## Board of Trustees 2023

Bob Stout, <i>Chair</i>	Billie Brandon Howell
Whitney Brown, <i>Vice Chair</i>	David Huff
Bob Lassiter, <i>Treasurer</i>	Sam R. Johnson
Julie H. Moore, <i>Secretary</i>	Jim McDowell
John Mitchell ( <i>Past Chair</i> )	Ken McFadyen
Greg Andeck (at large)	Jim Newlin
Jim Barber	Tanya Marie Pender
Roberts Bass	Jerry Starnes
Tommy Cabe	Jennifer Zuckerman

## Council of Advisors 2023

Alfred G. Adams	Marsha Ralls Hershman
Becky Anderson	Charles Higgins
Deanna M. Ballard	Sean Higgins
Anne Barnes	Michael Hobbs
Jack Betts	David Holt
W. Louis Bissette, Jr.	Raymond Hornak
Philip Blumenthal	Olson Huff, M.D.
Paul Bonesteel	Craig Lancaster
Greg Brown, Ph.D.	Tim W. Maloney
Hobie Cawood	Phil Noblitt
Pat Shore Clark	Rebecca Reeve
Heather Cotton	Bob Shepherd
Harvey Durham, Ph.D.	Gary Stewart
Joe Epley	Kent Tarbutton
Broadus Fitzpatrick	Morgan Tarbutton
Donald H. Gest	Cynthia Evans Tessien
Peter Givens	Anne Mitchell
Brian Gulden	Whisnant, Ph.D.
Wake Hamilton	Richard T. "Stick" Williams
Charles Hauser	Brad Wilson

## Staff

Carolyn Ward, Ph.D. <i>Chief Executive Officer</i>	<b>Blue Ridge Music Center</b>
Jordan Calaway <i>Chief Development Officer</i>	Richard Emmett <i>Program Director</i>
Kevin Brandt <i>Va. Development Director</i>	Marianne Kovatch <i>Associate Program Director</i>
George Ivey <i>N.C. Development Director</i>	Hunter Bryant <i>Production Associate</i>
Rebecca Askew <i>Database Manager</i>	<b>Kids in Parks</b>
Elizabeth Hickman <i>Finance &amp; Administrative Director</i>	Jason Urroz <i>Program Director</i>
Susan Fitzpatrick <i>Finance &amp; Administrative Manager</i>	Adam Roades <i>Associate Program Director</i>
Rita Larkin <i>Communications Director</i>	Erin Voss <i>Data Manager</i>
Meg Puett <i>Graphic Design &amp; Communications Manager</i>	Meghan McDevitt <i>Graphic Designer</i>

**717 S. Marshall St., Suite 105B  
Winston-Salem, N.C. 27101**

Additional offices in Asheville, Galax, and Lynchburg  
**(866) 308-2773**

**In 2022, the Foundation's 25th anniversary year featured many wonderful highlights, but chief among them was the chance to celebrate the accomplishments you've made possible along all 469 miles of the Blue Ridge Parkway.**

This anniversary issue of our annual report serves as a road map, of sorts, that traces just some of the hundreds of projects and programs you've championed over the years.

You've saved rustic historical structures such as Ramsey Cabin, Johnson Farm, and a grand one, Flat Top Manor. Because of you, families can learn about the natural world at James River and seven other Kids in Parks TRACK Trails along the Parkway. Your gifts allow visitors to enjoy bluegrass, Americana, country, and more genres at the Blue Ridge Music Center and additional destinations. Your contributions have cleared trails and overlooks and revived picnic areas and campgrounds. You've created exhibits and bridges, and even built a visitor center and restrooms, all to improve the Blue Ridge Parkway for every traveler.

Whether you boosted our earliest projects in the national park or just recently joined our Community of Stewards by volunteering or giving, you play a key role in the inspiring history of the Foundation. Thank you for all you do to protect the national park, giving each visitor a wealth of experiences to cherish.



*To learn about even more Parkway successes, you can explore an online map of completed projects at [BRPFoundation.org/projectmap](https://BRPFoundation.org/projectmap) or by scanning the QR code.*



**Carolyn Ward**  
Chief Executive Officer  
Blue Ridge Parkway Foundation

**Congratulations to the Blue Ridge Parkway Foundation's Community of Stewards on 25 years of supporting the National Park Service mission at work on the Blue Ridge Parkway!**

It is easy to point to so many examples of Foundation support that have both protected park resources and provided for the enjoyment, education, and inspiration of park visitors—hallmarks of the National Park Service mission.

From new exhibits at Waterrock Knob featuring Eastern Band of the Cherokee Indians syllabary and history to hosting thousands of visitors at the Blue Ridge Music Center, Foundation support benefits the Parkway and the many communities through which it passes. These communities are the backbone of the Parkway experience for 16 million visitors in the last year, and we are looking forward to deepening our connection with these communities in the months ahead.

Along the Parkway, the National Park Service is making historic investments in our critical infrastructure, thereby allowing us to provide another generation of services and experiences for visitors. As we look back on 25 years of meaningful contributions to the park, I am even more excited for where the Parkway and the Foundation will go during the next 25 years.

We have much to be proud of together, and much to look forward to. I remain deeply grateful to the Blue Ridge Parkway Foundation for its continued support. Through its hard work, and the generous spirit of our shared stewards, our partnership can sustain the Parkway as a place of meaning and deepen our impact on our communities for generations to come.



**Tracy Swartout**  
Superintendent  
Blue Ridge Parkway

# PRESERVING HISTORY & CULTURE

Your support over the last 25 years ensured that so many of the places, traditions, and records that hold the history of the Blue Ridge Mountains, from rustic log cabins to music and black-and-white photographs, will not be lost to time.

## BLUE RIDGE MUSIC CENTER

### Hear the mountains

The Foundation's journey at the Blue Ridge Music Center began as, and still remains, a mission to preserve an important facet of the cultural heritage of the mountains. Since taking over management of musical programs from the National Council for the Traditional Arts in 2012, the Foundation has successfully expanded the center's offerings and engaged more visitors in the traditions of mountain music.

Through your support, the annual Summer Concert Series has grown in attendance, number of performances each season, and the diversity of performers. Midday Mountain Music sessions continue to entertain visitors daily. The On the Road program entertains and engages audiences in their own communities with concerts across the region. The Music Center has reached beyond performances, hosting in-person and online conferences to address in-depth topics such as: Mill Towns & The Birth of American Music; A Place in the Band: Women in Bluegrass & Americana Music; and Deep Roots, Many Voices, which explored issues related to diversity in American Roots Music. Last year, the Music Center helped the National Park Service restart Sunday afternoon traditional music concerts, dubbed Milepost Music, at Humpback Rocks, Peaks of Otter, Roanoke Mountain Picnic Area, Mabry Mill, and Doughton Park.

Thank you to all the supporters who keep the music alive on and off the Parkway.



### Highlights from the decade

**222,000** Midday Mountain Music attendees

**55,000** Summer Concert Series attendees

**19,000** On the Road performance attendees

### Notable performers

Alison Krauss · Amythyst Kiah · Carlene Carter · Carolina Chocolate Drops · Della Mae · Jerry Douglas · The Kruger Brothers · Kontras Quartet · Mandolin Orange & Winston-Salem Symphony · Molly Tuttle & Golden Highway · Old Crow Medicine Show · The Quebe Sisters · Rhiannon Giddens · Ricky Skaggs · Rosanne Cash · Scythian · Sierra Hull · The Steel Wheels · Steep Canyon Rangers · Tuba Skinny · Wayne Henderson & The Virginia Luthiers



## MOSES H. CONE MEMORIAL PARK

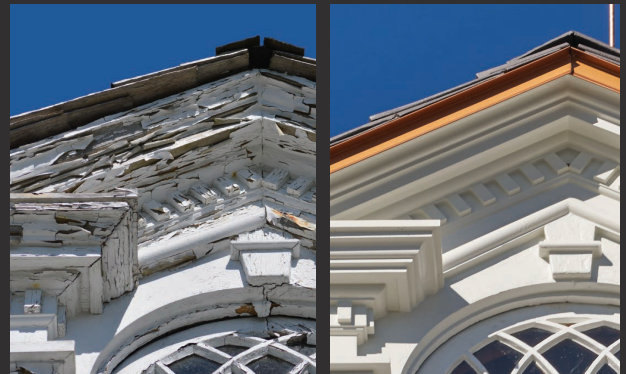
# High Country masterpiece

One of the Foundation's earliest projects involved restoring the balustrade on the front lawn of Flat Top Manor. That renewed feature became just one in a long line of projects achieved at the former country estate of Moses and Bertha Cone. Your continued dedication to this 3,500-acre park led to repairs of the carriage trails and Heart Pond, the construction of restrooms at Bass Lake, recording of oral histories with Cone family members, creation of a master plan for the estate, a virtual tour of the manor, additional ranger assistance, installation of a new fire suppression system, and much more. Two monumental achievements are the listing of the estate on the National Register of Historic Places, and more recently the dramatic restoration of Flat Top Manor's exterior.

## Public Lands Partner Award



The Public Lands Alliance awarded the Foundation and National Park Service the 2022 Public Lands Partner Award for our joint project to rehabilitate the exterior of Flat Top Manor.



*Flat Top Manor photos by David Huff*

## MABRY MILL

# The grist of it

As one of the most photographed destinations on the Parkway, Mabry Mill captures the imagination of visitors. Your gifts allowed the Foundation to replace the mill's faltering water wheel in 2014 and flume in 2019. These key components are crucial to illustrating how Ed and Lizzie Mabry's enterprise operated during the early 1900s.



*The rehabbed water wheel and flume at Mabry Mill*



Camp Catawba display

### EDUCATIONAL SIGNS

## Gone but not forgotten

When landmarks are lost, there is the danger that their stories will vanish, too. Thankfully, two such places along the Parkway are now remembered with interpretive signs. The Camp Catawba display in Blowing Rock, N.C., tells the tale of the beloved summer camp for boys established by Vera Lachmann, a Jewish refugee from Nazi Germany. The Foundation also provided funds for a new sign that captures the fascinating history of Buck Spring Lodge, George Vanderbilt's hunting retreat which once stood near Mount Pisgah.

### CABINS & FARMS

## Rustic appeal

Remote homesteads dotted the mountains long before the Blue Ridge Parkway was even a dream. A handful of those rustic places still showcase the experiences of those who came before us. Your donations rehabilitated the barn and outbuildings of Johnson Farm at the Peaks of Otter and revived nearby Polly Wood Ordinary, a 19th-century establishment that provided lodging and meals. At Humpback Rocks, a National Park Service team saved the one-room Ramsey Cabin and log buildings, including a spring house. Thanks to your support, these landmarks allow visitors to step into the past.



The barn at Johnson Farm after repairs

### DIGITAL ARCHIVE

## Photographic memory

It's a breeze to delve into the history of the Parkway through photographs and documents, thanks to your support for a digital archive project. More than 7,000 images that capture the Parkway story from construction to modern day can be searched and downloaded at [NPGallery.nps.gov/blri](https://NPGallery.nps.gov/blri).



Left to right: Buck Spring Lodge in 1961; groundbreaking ceremony for final link of Parkway in 1968; July Fourth at Doughton Park in 1956; Parkway Craft Center at Flat Top Manor in 1952. Photos courtesy of Blue Ridge Parkway/NPS

# EDUCATION & OUTREACH

The Parkway holds lessons about nature, history, culture, and even how to care for its resources. Your contributions ensure those lessons are imparted to visitors and that future stewards will walk in your footsteps to protect the Parkway.

## YOUNG STEWARDS

### Kids in Parks

Families face a dizzying array of distractions: television, smartphones, video games, social media, and more. Those distractions have only increased since our Kids in Parks program started in 2008. The modern world can make it difficult to slow down, shut out the noise, and find ways to be happier and healthier.

The idea behind our Kids in Parks program was to lead children and their families away from electronic devices and out into nature, giving them opportunities to become physically active, spend quality time together, and develop meaningful connections with nature. The program started with one trail on the Parkway and blossomed into a

national network of more than 250 TRACK Trails in 16 states, Washington, D.C., and the Qualla Boundary. Over the past 13 years, children have completed more than 1 million adventures on TRACK Trails.

The combination of the program's growth and ability to engage families has earned Kids in Parks a reputation as a leader in the movement to reconnect children with nature. Over the years, the program has been endorsed by the American Academy of Pediatrics; honored by the White House with a "Let's Move!" Champion of Change award; included in a report released by the U.S. Surgeon General; and earned awards from the Public Lands Alliance and SHIFT.

Today, the program crosses state and agency boundaries, linking national parks, state parks, city/county parks, and other public lands through a common mission to get kids and families active outdoors. Kids in Parks is also helping parks grow stronger as new adventurers discover the natural, cultural, and historical resources found along each trail, and inspires them to become the next generation of stewards caring for all public lands, including the Blue Ridge Parkway.

#### 1 MILLION

miles walked by kids on TRACK Trails

#### 150 MILLION

calories burned by kids on TRACK Trails

**63%** of participants were first-time park visitors

**48%** of participants intentionally visited the park to hike a TRACK Trail



*Father and son explore a TRACK Trail*

## YOUTH CREWS

# Hands-on experiences

Over the years, the Foundation has helped fund youth conservation crews to tackle essential projects including clearing carriage roads at Moses H. Cone Memorial Park, rehabbing trails at Craggy Bald, building a retaining wall along the Tanawha Trail, and constructing stairs at the Rough Ridge trailhead. Crews with the American Conservation Experience, North Carolina Youth Conservation Corps, and Conservation Corps NC have made impressive contributions to the Parkway because of your gifts.



North Carolina Youth Conservation Corps crew

---

## INSIGHTS & EQUIPMENT

# Rover know-how

Last year, rovers took up positions at Devil's Courthouse and Rough Ridge to share information about peregrine falcons, rare plants, and the importance of staying on the trails. They improved visitors' understanding of the park and helped law enforcement rangers keep trekkers safe. Donations provided these volunteers with radios, rain gear, backpacks, first-aid kits, and training.



Rover Bill with his equipment at Devil's Courthouse

## OVERLOOK EXPANSION

# Geology lesson

At Linville Falls, your donations allowed National Park Service crews to expand the Upper Falls Overlook and install educational panels to share details about a geological feature tied to the creation of the Appalachian Mountains—the Linville Falls Thrust Fault. The site is rare because most traces of these shifts in the Earth's crust are buried deep underground. It is now a place for scientists, students, and casual Parkway visitors to uncover a greater understanding of the mountains.



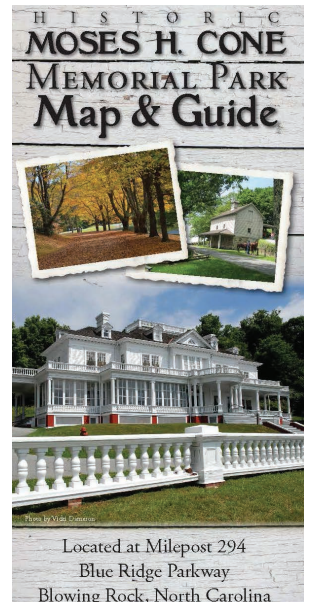
Ribbon cutting for the expanded Upper Falls Overlook

---

## MAPS & PUBLICATIONS

# Guiding the way

You may not wear a ranger hat, but over the years you've helped thousands of visitors find their way on the Parkway. Your donations funded the design and printing of original maps for Moses H. Cone Memorial Park, Bass Lake, and Doughton Park, numerous editions of the *Blue Ridge Parkway Outdoor Guide*, and complimentary copies of trail maps detailing the recreation areas that dot the entire 469-mile route.



Located at Milepost 294  
Blue Ridge Parkway  
Blowing Rock, North Carolina



## NEW EXHIBITS

# Learning along the way

Visitors are greeted by up-to-date and engaging exhibits at Waterrock Knob, Craggy Gardens, and the Museum of North Carolina Minerals, thanks to you.

At Waterrock Knob Visitor Center, makeshift poster board displays were replaced with attractive interactive exhibits featuring updated information on native black bears, elk, and other flora and fauna. Another panel tells the Cherokee story of "How the World was Made." In Cherokee syllabary, the story describes a buzzard creating the peaks and valleys of the Blue Ridge Mountains by flapping its wings.

Your gifts for Craggy Gardens Visitor Center funded new displays highlighting the many intriguing aspects of this high-elevation environment. The exhibits illustrate the harsh weather and growing conditions, common high-elevation plants, animals, and birds, hidden wildlife, and more.

In 1998, the Museum of North Carolina Minerals underwent a renovation and expansion thanks to your support and a partnership with Mitchell County. Colorful and interactive displays fill the museum, showcasing more than 300 regional gems and minerals as well as explaining the historical importance of the local mining industry.



Tom Belt, Superintendent Tracy Swartout, Tommy Cabe, Carolyn Ward, and Charles Taylor at the Waterrock Knob exhibit celebration



An updated display at Waterrock Knob Visitor Center



Exhibits at the Museum of North Carolina Minerals



Ribbon cutting for Craggy Gardens exhibits

# ENHANCING VISITOR EXPERIENCES

The incredible experiences along the Parkway are gifts to each visitor. For the last 25 years, donors have contributed to enhancing excursions in the national park by rehabilitating trails, constructing and reopening facilities, clearing overlooks, revamping picnic areas and campgrounds, and additional projects.

## RECREATION AREAS

### Better spaces to play outdoors

The places where visitors can immerse themselves in nature are key to memorable Parkway journeys. Your gifts have revitalized many of these outdoor areas.

Past trail rehab projects include paving Abbott Lake Trail to upgrade the path to ADA-compliance and adding a fishing pier. At Craggy Bald, a twisted and rutted path was transformed into a smooth trail that is much easier and safer to climb.

Expansive views have been restored at many roadside overlooks thanks to funding for clearing projects by arborist crews. You also provided funding for a trailer to transport climbing gear, ropes, chainsaws, and other equipment needed to restore scenic vistas and remove hazardous trees.

Your gifts greatly improved the amenities at Julian Price Memorial Park. Trails in the picnic area were repaved and new picnic tables and fire grills were installed. The construction of a six-stall shower house transformed the camping experience at this popular destination. Creature comforts, namely new restrooms at Bass Lake at Moses H. Cone Memorial Park and the trailhead at Graveyard Fields, are two additional projects that make Parkway exploration more convenient.



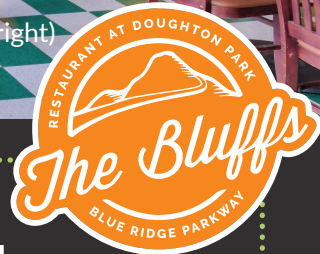
*The boardwalk and fishing pier at Abbott Lake at Peaks of Otter*



*The repaired Craggy Bald Trail. Bass Lake Comfort Station*



Photos (center & right) by David Huff



## THE BLUFFS AT DOUGHTON PARK

# A classic returns

The Bluffs Restaurant at Doughton Park is slated to welcome diners for homestyle meals for its third full season this spring. Donor support, paired with funds from the N.C. General Assembly and Appalachian Regional Commission, allowed for extensive restoration of the circa-1949 restaurant that operated for more than 60 years. The dining establishment fully reopened for service after an 11-year closure.

The repairs and upgrades included a new electrical system, reconstructed lunch counter, ADA-compliant restrooms, a complete kitchen equipment update, and more. However, the project stayed true to the original look of the restaurant, including the checkerboard floor, brass light fixtures, and timber beams. Thanks to all who were involved in this process, new generations of guests can create memories at the Parkway's first dining establishment.

## 2022 Visitor Experience Award



The National Scenic Byway Foundation awarded the Foundation the 2022 Visitor Experience Award for the rehabilitation and reopening of The Bluffs Restaurant.

## COMMUNICATION SYSTEMS

# Safety first

Your commitment to safety along the scenic route funded the construction of a Communications Center to serve as a critical hub for improved radio communications for Parkway law enforcement, maintenance staff, and others. A follow-up investment in a new Computer Automated Dispatch (CAD) system now streamlines how dispatchers assist rangers or local emergency responders thanks to access to immediate mapping, site details, and background information. The enhanced operations now help serve additional parks in the Southeast.

# PROTECTING NATURAL RESOURCES

Over the years, your continued support has played a critical role in balancing the impacts of millions of Parkway visitors each year and protecting the flora and fauna that call this distinct landscape home. Through wildlife studies, training opportunities, and impact mitigation projects, the Parkway is a stronger and healthier natural environment.

## WILDLIFE CAMERAS

### Creatures great & small

With an ecosystem so diverse, there is no shortage of creatures to study in the park. The foremost goal is to find ways to safeguard the species and habitats found here. For example, funding for past crayfish surveys and the tracking of bog turtles allowed biologists to discover how to better protect these species.

Your support for a bioblitz at Rock Castle Gorge led to a more well-rounded understanding of the location's diverse inhabitants. In a 24-hour period, volunteers and scientists scoured the forest to locate and document as many plants, insects, and animals as they could find. Parkway biologists put this data to use in their plans to protect these species and their habitats.

For the last seven years, biologists and volunteers have placed motion-activated cameras in remote areas and captured tens of thousands of images of 22 mammal species and 30 bird species. The project gives park biologists insights into the distribution and abundance of mammals and how humans and elevation influence where they are found in this ecological corridor.



*A black bear, coyote, and deer caught on camera*



*A bog turtle outfitted with a transmitter and a crayfish survey*



*Bioblitz participants. Photo by Marielle DeJong*

## THWARTING POACHERS

# Taking action

Law enforcement rangers are tasked with the safety of visitors on the Parkway, but also with safeguarding the natural resources that make the park so special. Your gifts have provided training and equipment to help with this important responsibility. Donor funding gave rangers extra technology on the ground to detect potential poachers at sites of sensitive plant populations, including ginseng and galax.

Tracking down poachers after an offense is no easy task. That's why the Foundation also funded forensic wildlife training for Parkway staff. Rangers and biologists learned techniques in forensic entomology, field ballistics analysis, and GPS mapping of evidence to increase successful prosecutions of poachers.



*Above: Confiscated witch hazel bark and poaching tools. Below: Forensic training participants*



*A section of boardwalk on Rough Ridge Trail*

## BOARDWALKS & BRIDGES

# Tread lightly

Thanks to you, several boardwalks and bridges within the park lessen the environmental impact of hikers on the landscape. Generous donations funded the construction of boardwalks that protect rare plant species at Rough Ridge Trail and a bridge that prevents the disturbance of Basin Creek at Doughton Park. Gifts and partnerships also supported the construction of boardwalks at Graveyard Fields and Price Lake, as well as bridges at the Blue Ridge Music Center on the High Meadow Trail and Mountains-to-Sea Trail at Boone Fork.

# CELEBRATIONS

APRIL 7, 2022

## Roanoke rendezvous

A reception in honor of the Foundation's 25th anniversary was hosted at the Virginia Museum of Transportation in Roanoke. The event honored special members of our community of stewards. Broaddus Fitzpatrick was awarded the Pat Shore Clark Stewardship Award for his exemplary service to the Foundation. George Kegley was honored posthumously with the Legacy Stewardship Award. Jean Hoell accepted the Corporate Champion Award on behalf of Delaware North-Peaks of Otter Lodge, which supports the Foundation's mission through the Parkway Partners checkout counter donation program.



*John Mitchell, Carolyn Ward, Virginia Senator David Suetterlein, Landon Howard, Superintendent Tracy Swartout, Virginia Delegate Joe McNamara, and Greg Andeck*



*Broaddus Fitzpatrick with Andy Kegley, who accepted the Legacy Service Award for his late father George Kegley. Photos by Taylored Images*

---

JUNE 18, 2022

## Awards show

The Foundation honored Blue Ridge Music Center supporters and a junior ranger at the outdoor amphitheater. Junior Ranger Ian Jordan was honored with the Youth Ambassador award for his contributions to Kids in Parks. W.L.A. Trucking earned the Corporate Champion Award. Radio station 88.5 WFDD received the Media Partner Award. The Yadkin Arts Council was honored with the Partnership Award. The musicians who perform daily Midday Mountain Music sessions were presented with the Volunteer Service Award. Longtime volunteer Aubrey Arrington was honored with the Music Center Champion Award. The National Council for the Traditional Arts was recognized with the Visionary Award for the organization's work to establish the Music Center.

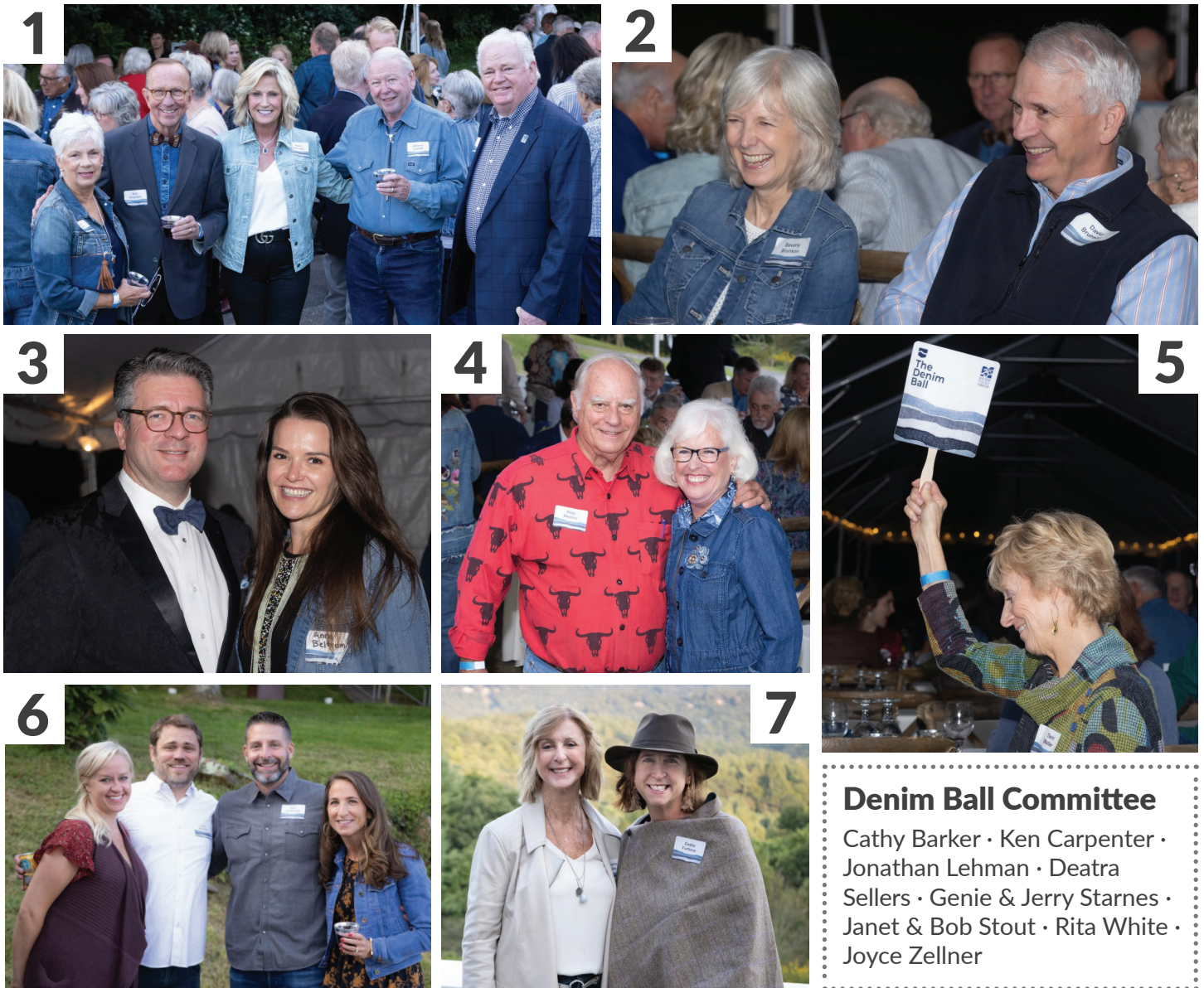


*Ian Jordan receives his award*

SEPTEMBER 15, 2022

# The Denim Ball

The 2022 Denim Ball was one to remember, with more than 200 guests in attendance and \$240,000 raised in support of Moses H. Cone Memorial Park. The event was hosted on the lawn of Flat Top Manor, the majestic circa-1901 home previously owned by Moses and Bertha Cone. Guests mingled, placed bids in a silent auction, and enjoyed dinner. Auctioneer Jenny Koehn led a lively bidding session that included beach and mountain getaways and fly-fishing and biking adventures. Attendees finished the night dancing to the music of Soul Benefactor. We are grateful to all the guests, sponsors, and auction donors who made the evening a success.



## Denim Ball Committee

Cathy Barker · Ken Carpenter ·  
Jonathan Lehman · Deatra  
Sellers · Genie & Jerry Starnes ·  
Janet & Bob Stout · Rita White ·  
Joyce Zellner

(1) Janet Stout, Eric and Diane Overcash, Richard Gambill, and Bob Stout (2) Beverly and David Brunson (3) Brian Grisham and Anna Beltramo (4) Pete Gherini and Joyce Zellner (5) Terri Waller places a winning bid (6) Beth and Chris Wetmore with Bob Patterson and Melissa Viatori-Patterson (7) Catherine Vitale and Dottie Farfone. Photos by Lonnie Webster

NOVEMBER 17, 2022

# Brewing blast

More than 100 guests marked the Foundation's 25th anniversary with a signature craft beer, food, and live music at Highland Brewing Company in Asheville. It was the perfect environment to honor leaders who have guided the Foundation since its inception in 1997.

Past chairs of the board of trustees were inducted into the newly created Abbott-Everhardt Society, named for the Parkway's original landscape architect, Stanley Abbott, and late Director of the National Park Service and Parkway Superintendent, Gary Everhardt.

The society's inductees are Alfred Adams, Jack Betts, Lou Bissette, Greg Brown, Hobie Cawood, Pat Shore Clark, Linda Combs, Harvey Durham, Broaddus Fitzpatrick, Houck Medford, John Mitchell, Bob Shepherd, Gary Stewart, Cynthia Tessien, and Ken Wilson.



(1) Jodi Wygmans with daughter, Zea (2) Ashley Rice, Ben Wilder, and Jason Urroz (3) Rachel Stasny, Marielle DeJong, Cabell Brand, and David Huff (4) Deb McDowell and Cynthia Tessien (5) Sara and Lou Bissette with Beth and Alfred Adams. Photos by Kaitlin Trimboli Photography



# PICK YOUR WAY TO GIVE

We invite you to explore these avenues of giving to sustain the Parkway for current and future generations.

## Tribute Gifts

A donation in honor or in memory of a loved one is a meaningful way to celebrate their connection to the Parkway or to commemorate a milestone, such as a birthday, anniversary, or wedding. (See the list of 2021-2022 tribute gifts on page 24.)

## Monthly Giving

As a Parkway Protector, you can support the Foundation's work year-round by making an automated monthly credit card payment of \$5 or more. (See the list of Parkway Protectors on page 28.)

## Beneficiary Designations

By naming the Foundation as a beneficiary in your will, 401(k), IRA, or life insurance policy, you will create an enduring legacy that protects the Parkway for many years to come.

### Sample bequest language:

"I, [name], of [city, state, ZIP], give, devise, and bequeath to the Blue Ridge Parkway Foundation (Tax ID: 31-1512730), [written amount or percentage of the estate or description of property] for its unrestricted use and purpose."

### Beneficiary information for IRAs, 401(k)s, and insurance policies:

Blue Ridge Parkway Foundation  
717 S. Marshall St., Suite 105B  
Winston-Salem, NC 27101  
Tax ID: 31-1512730



Linn Cove Viaduct. Photo by Arianna Treppel

## Workplace Giving



Contact your participating human resources office to give to the Foundation through EarthShare's Workplace Giving, Commonwealth of Virginia Campaign, or the N.C. State Employees Combined Campaign (#1121). Some companies will match employee gifts. Ask your employer for information or visit [doublethedonation.com/brpfoundation](https://doublethedonation.com/brpfoundation).

## Additional Opportunities

For more ways to give, including Donor Advised Funds, IRA Qualified Charitable Distributions (QCDs), and gifts of stock, contact development officers Jordan Calaway ([jcalaway@brpfoundation.org](mailto:jcalaway@brpfoundation.org)) or George Ivey ([givey@brpfoundation.org](mailto:givey@brpfoundation.org)).

## Give Now!



To make a gift now, scan the QR code or visit [BRPFoundation.org/donate](https://BRPFoundation.org/donate).

Platinum  
Transparency  
2022

Candid.

Charity  
Navigator



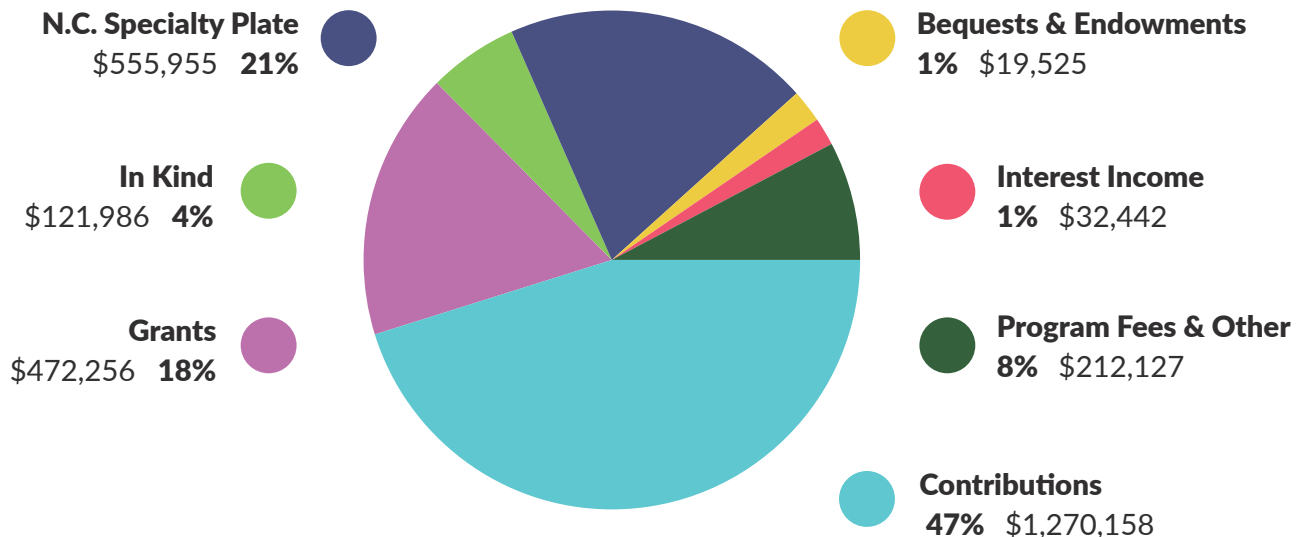
FOUR-STAR

# FINANCIALS

<b>PUBLIC SUPPORT &amp; REVENUE</b>	<b>2021</b>	<b>2020</b>
Contributions	\$1,270,158	\$1,059,288
Grants	\$472,256	\$852,897
In Kind	\$121,986	\$71,557
N.C. Specialty Plate	\$555,955	\$527,363
Bequests & Endowment Income	\$19,525	\$61,498
Interest Income	\$32,442	\$13,891
Program Fees & Other	\$212,127	\$313,377
<b>Support</b>	<b>\$2,684,449</b>	<b>\$2,899,871</b>
<b>Net Gains (Losses) Investments</b>	<b>\$106,645</b>	<b>(\$60,234)</b>
<b>Total Support &amp; Revenue</b>	<b>\$2,791,094</b>	<b>\$2,839,637</b>

<b>EXPENSES</b>	<b>2021</b>	<b>2020</b>
Program Services	\$1,679,056	\$2,093,583
Management & General	\$115,782	\$114,115
Fundraising	\$272,644	\$322,549
<b>Total Expenses</b>	<b>\$2,067,482</b>	<b>\$2,530,247</b>
Change in Net Assets	\$723,612	\$309,390
Net Assets at Beginning of Year	\$5,290,908	\$4,981,518
<b>Net Assets at End of Year</b>	<b>\$6,014,520</b>	<b>\$5,290,908</b>

## Support: \$2,684,449



Financial information is derived from the Blue Ridge Parkway Foundation's 2021 financial statements, audited by an independent registered public accounting firm, and is available on our IRS Form 990 and at [BRPFoundation.org/financials](http://BRPFoundation.org/financials).

# COMMUNITY OF STEWARDS

The Blue Ridge Parkway Foundation is thankful for the individuals, businesses, foundations, and partners who contribute to the safekeeping of the Blue Ridge Parkway. Donors who gave \$250 or more between January 1 and December 31, 2021, are acknowledged on the following pages. They form a Community of Stewards that is committed to preserving and protecting the scenic route today and forever.

*Photo by Elijah Mears*

## Foundations

AmazonSmile Foundation  
American Endowment  
Foundation  
Annapurna Foundation  
Stephen M. Bailey & Lucia H.  
Bailey Family Foundation  
George T. Baker Foundation  
William S. Barnickel  
Foundation  
Frederick Bliss Foundation  
Blue Cross and Blue Shield of  
NC Foundation  
BlueCross BlueShield of SC  
Foundation  
Bryson Foundation Ltd.  
The Mary H. Cain Foundation  
Dan Cameron Family  
Foundation  
Charlottesville Area  
Community Foundation  
Victoria Miller Talley  
Colebank Foundation  
Community Foundation of  
Greater Greensboro  
Community Foundation of  
Western North Carolina  
Community Foundation of  
Western Virginia  
Considering Animals Fund  
John Crosland III Charitable  
Foundation  
The Ebert-LeBlanc Family  
Foundation  
Bill and Diane Elliot Fund  
of Community Foundation  
Serving Western Virginia  
Courtney Knight Gaines  
Foundation

Garrett Family Ever Forward  
Foundation  
Hanna Foundation  
Harrill Family Foundation  
Intel Foundation  
Jelks Family Foundation, Inc.  
Jewish Foundation of  
Greensboro  
Kulynych Family  
Foundation I, Inc.  
Kulynych Family  
Foundation II, Inc.  
Longleaf Foundation  
Morningstar Foundation  
National Park Foundation  
The Newman Family Fund  
North Carolina  
GlaxoSmithKline Foundation  
Carol B. Phelon Foundation  
R & M Foundation  
Ruth & Jacques Sartisky  
Foundation  
J M Smith Foundation  
Storey Family Charitable  
Gift Fund  
Surtman Foundation  
Williams Family Foundation  
Ken and Deborah Wilson  
Foundation, Inc.  
Willow Branch Foundation

## Businesses

America's National Parks  
Attractions Print  
Banner Elk Sports  
Barringer Construction  
BHE GT&S  
Butler & Burke, LLP

Carilion Clinic  
Charmed Asheville  
Chetola Resort at  
Blowing Rock  
City Gallery  
County Sales  
Delaware North-Peaks of  
Otter Lodge  
Don Wilson Builders, Inc.  
The Floyd Country Store  
The Galax Smokehouse  
Hemlock Inn  
J. Scott Graham Photography  
Jonathan Burton Photography  
& Associates  
The Law Offices of Timothy  
D. Welborn  
Markel Corporation  
Mast General Store  
Metro Wines  
Milo C. Cockerham, Inc.  
MoosePacks  
Murphy's Naturals  
New River Trail Cabins  
Parkway Brewing Company  
Raytheon Technologies  
River Ridge Land &  
Cattle Company  
Rockydale Quarries  
Corporation  
The Rosemyr Corporation  
Roy's Diamond Center  
Saint-Gobain  
SkyLine Membership  
Corporation  
Skyline National Bank  
State Farm  
Sterling Associates Group  
T. Pennington Art Gallery, Inc.  
Target

Triad City Beat  
UnitedHealth Group  
Well-Spring Life Plan  
Community  
Wicked Weed Brewing  
Winston-Salem Journal  
W.L.A. Trucking

## Community Partners

88.5 WFDD Public Radio  
for the Piedmont  
Appalachian Regional  
Commission  
Asheville Mountain Trails,  
Meetup.com  
The Birthplace of Country  
Music Museum  
Blowing Rock Chamber  
of Commerce  
Blowing Rock Charity  
Horse Show  
Blowing Rock Tourism  
Development Authority  
Blue Ridge Conservancy  
Blue Ridge Hiking Club  
Blue Ridge National  
Heritage Area  
Blue Ridge Parkway  
Association  
Blue Ridge Parkway Employee  
& Alumni Association  
Buncombe County  
Carolina Mountain Club  
Conservation Corps of  
North Carolina  
The Conservation Fund



Conservation Trust for  
North Carolina  
The Crooked Road  
EarthShare of North Carolina  
Ferrum College  
Grayson County  
Henderson County Tourism  
Development Authority  
National Council for the  
Traditional Arts  
National Endowment for  
the Arts  
NC Division of Motor Vehicles  
NC Folk Festival  
Patrick County Tourism  
Radio Bristol  
Transylvania County Tourism  
Yadkin Arts Council  
Winston-Salem Symphony

## Endowments

James Erwin Asbury and  
Nesbitt Samuel Asbury  
Memorial Endowment  
James L. and Pat Shore Clark  
Elspeth and James McClure  
Clarke  
Alan and Sally Cone  
Bud and Brenda Hilton  
Imerys/K-T Clay Company  
Petro Kulynych  
McSwain Family Charitable  
Fund  
Houck and K.B. Medford  
Judy and Bill Watson  
O. Bliss and Susan Williams  
Bland and Ada Worley  
ZAP Fitness

## Individual Giving

### \$10,000+

Anonymous  
Beth & Hal Carson  
Patricia Shore Clark  
James Colvin Davies  
Charlotte M. Hanes  
Larry & Barbara Griswold  
Donald Groves  
Nancy Howie  
NC BRPF License Plate Holders  
Marcus Simpson &  
Marilyn Westpal

### \$2,500-\$9,999

Anonymous  
Beth & Alfred Adams  
Mary Baldwin  
Beverly Battle  
Lida & Hanes Boren  
Amy & Rick Boucher  
Susan & Peter Brockway  
Mike & Clarkie Brown  
The Capps Family  
Julia Carpenter  
Christine & Ken Castelleo  
Becky & Munroe Cobey  
Janet Cone & Larry Imeson  
Lori & Michael Constantino  
Daniel Cowles  
Bob Drennan  
Margaret & Mac Foster  
Odette & Ben Hambright  
Betty & Keefe Hayes  
Dee & Bill Hilt  
Billie Brandon Howell  
Susan & David Jamison  
Sue & Bill Jones  
John Koenig  
Susan & William Leonard  
Jodi & Raymond Lockwood  
Cathy Logue  
Nancy & Russ McDaniel  
Deborah & Jim McDowell

Steve McSwain  
Mr. & Mrs. Dyke Messinger  
Carol & Keith Naumann  
Jim Newlin & Silvie Granatelli  
Betty Parrish  
Sarah Plymale  
Julia & Dave Ralston  
Kim & Robby Ray  
Genie & Jerry Starnes  
James Stephens & K. Ann Berry  
Estate of Helen Fenneman  
Stocksdale  
Cathy & William Stone  
Janet & Bob Stout  
Terri Waller  
H. Thomas Webb &  
Kathryn Heath  
Kirby & Gloria Werninck  
Barbara & J. Tracy Wilkerson  
Jean & Walter Wilkinson  
Dr. Eric Wilsnack  
Carter Wittman  
Luci & Bruce Wright

### \$1,000-\$2,499

Anonymous  
Jane Abel  
Nancy & John Aiello  
Linda & Norman Aldridge  
Nancy & Dale Allison  
Connie Amburn  
Ed Anderson  
Chip Anderson  
Bernard & Holly Arghiere  
Aubrey Arrington  
Bess & Rod Baird  
Peter & Jean Anne Barnes  
Laura & William Barrier  
Judith & Roberts Bass  
Martha & Jack Betts  
Daniel Boehmer  
David Boyles  
Joseph M. Brantley III  
Laura Bulson  
The Carter Family  
Gail & G.W. Catron  
Catherine Chiles & Pieter  
Joost van Wattum  
David Clawson  
Gina & John Cocklereece  
Karen & Michael Cogburn  
James Coleman  
Kathy & Kenny Conti  
Faye & John Cooper  
Susan Craddock  
Janice & Andrew Cwalina  
H. Leigh & Jennie Derby  
P.K. & Ron Donson  
James Doughton  
Vernon & Mary Beth Duty  
Ashley Edwards & Ralph  
Womble

Jane & Nathan English  
Anne Farmer  
Elizabeth L. Fenwick  
Douglas Flint  
Estate of Roy M. Gallagher, Jr.  
Kelly & Meredith Graves  
Eugene Grecheck  
Leslie Grubb  
Hawk Hagebak  
Linda & Pete Hall  
Kimberly & Kevin Halloran  
Peggy & John Harwell  
Susan & Charles Hauser  
Amret & Wesley Hawfield  
Anita Henderson  
Vickie & Charlie Hester  
Julie Hettiger &  
Kenneth Nelson  
Mary & Richard Hill  
Carolyn & Tim Hilton  
Daniel Hilton  
Denise & John Holden  
Phyllis & John Holmgren  
Richard Ikenberry  
T. Cooper James  
Maxine Johnson  
Sarah Johnson  
Beth & Peter Juran  
Judy & Bill Kendrick  
Mary C. Kilpatrick  
Jeanette Kimmel  
Kent Kozar & Erin Wuebbens  
Kristy & George Lampe  
Deanna & Scott Lampe  
Frank Laney  
Jane & Bob Lassiter  
Jane Ledbetter  
Susan & David Lennox  
Sandra & Donald Leslie  
Victoria Lindberg  
Deborah & Justin Little  
Joseph P. Logan  
Ann B. Long  
Beth Lotspeich  
Rick Lotz  
Lu Ann & Joseph Love  
Catherine & Les Love  
Sherri & Gary Loveland  
Anita H. & John J. Lupo  
David Lynch  
Emi & Gibson McCall  
Marcia & John McCarley  
Rebecca & Michael McCracken  
Mr. & Mrs. Brian J. McMerty  
Preston McKee & Shuly  
Cawood  
Donna & Mike McNeil  
Monica & William McSwain  
Cama Merritt  
Pam & Tom Metz  
Nancy Michael  
Lee H. Minor

John Moore  
 Julie & David Moore  
 Mike Moyer  
 David Myers  
 Deborah & Parker Myers  
 Anna Nagy  
 Lynn Nash & Katie DeJarnette  
 Lee Ann & Drew Naylor  
 Rosemary & Arnold Nelson  
 Peter & Kelley Newsome  
 Judy Newton Scurry  
 Connie & Adam Ortiz  
 Diane & Eric Overcash  
 Robert Palmer  
 Cynthia Parks  
 Jeanne Patterson  
 Peggy & Benjamin Payne  
 Larry Pearce  
 Mary Ann Poole  
 Bobbi & Woody Poor  
 Bobby Post  
 Christopher Puin  
 Ann & David Raper  
 Beth & Jerry Redmond  
 Carol & Dave Reger Family  
 John Rendleman  
 Randall, Marilyn, Patrick &  
 Tucker Renegar, Holly Jolly  
 Ann & Fairfax Reynolds  
 Maria & John Rich  
 Lori & Tim Rowe  
 Nancy & Joseph Roy  
 Sally & Walter Rugaber  
 Michael Ryden  
 Steven Saylor  
 Anne Seawell  
 Barbara & Larry Settlemire  
 Megan & Daniel Shank  
 Judith Shubert  
 Perry Simpson  
 Sharon & Walt Smoski  
 Michelle & George Snead  
 Dorothy & Daniel Spangler  
 Richard Sparks  
 Fred & Alice Stanback  
 Myles Standish & Shelley Crisp  
 Anna & Verner Stanley  
 Thomas Statnick  
 Lee Anne & Gary Stiffler  
 Mary Lois & Charles Strickland  
 Margaret & C.L. "Curly" Stumb  
 Cynthia & Bill Tessien  
 Claudia Thomas  
 Edward Walker  
 Hannah & Mike Ward  
 Bill & Judy Watson  
 Bliss & Roderick Watson  
 Paula & Jim Weant  
 Joachim Weickmann &  
 Tamara Potter  
 Jill & Julian West  
 Carol Westmoreland

Dermot Whelehan  
 J.D. & Janie Wilson  
 Carole & Brad Wilson  
 Marilynn & Paul Woodall  
 Linda & Michael Zagorac  
 Joyce & James Zellner  
 Dorothy & David Ziemer

Nancy & Steve Zuk  
 Craig Zunka & JoEllen McNeal  
  
**\$500-\$999**  
 Anonymous  
 Sanders & Jeanne Abrahams  
 Sharon & Ricky Adkins

Ross Allen  
 Larry Ammons  
 Becky Anderson  
 Mary & Jack Anderson  
 Elizabeth & Richard Aronson  
 Grace & George Auten  
 Kay & William Bach

## The André Michaux Society

When you plan a gift, you become a member of The André Michaux Society, which honors the French botanist and explorer who enlightened others about the natural wonders of the Blue Ridge Mountains.



THE ANDRÉ  
**MICHAUX**  
 Society

Alfred & Beth Adams  
 Becky Anderson  
 Neal & Patrice Auspitz  
 William Barr\*  
 Ed Blair  
 Connie Boylan\*  
 Hilda Brannock  
 Dan & Linda Brown  
 Chip Callaway  
 Hal & Beth Carson  
 Rodney & Debra Clark  
 Calvin & Gail Clayton  
 Andrew & Janice Cwalina  
 Mabel Clark Corpening\*  
 Robert & Nancy DeHart  
 George & Sandra Fisher  
 Catherine Frampton\*  
 Robert F. Freeman\*  
 Roy M. Gallagher, Jr.\*  
 Elizabeth Hickman  
 Marge & Mark Hoecker

Thorunn Ivey  
 Mark James  
 Hana & Milo Karpisek  
 Sarah Kinnear\*  
 Karl & Edwina Kleeman  
 Tom & Darlene Knight  
 John Koenig  
 Mary Roberta Linn\*  
 Jack & Barbara Lockhart  
 Kim Long  
 Greg Madison  
 Tim & Jenifer Maloney  
 A.J. & Barbara McClure  
 Greg McKnight  
 Nicholas Moore  
 Arnold & Rosemary  
 Nelson  
 Linda & Mark Pasche  
 Howard Pearson\*  
 Robert & Rebecca  
 Schwartz

Bernadette Scott  
 Anne Seawell  
 Miriam Sexton  
 Mary Shuford\*  
 Gary & Lisa Stewart  
 Helen Fenneman  
 Stocksdale\*  
 Marellen & John Struhar  
 Julie & Les Taylor  
 Tim Thomas  
 Jim & Pat Toole  
 Vicki Troutman &  
 Mary Tucker  
 Martin Vaughn, Jr.\*  
 Bill & Judy Watson  
 Cliff Watts  
 Valeria Watts\*  
 Pam Westrick  
 Sungwan Yang  
 Martha Yount\*

*\*Donors who have passed away*

If you have already named the Blue Ridge Parkway Foundation in your estate plan, please let us know, so we can officially welcome you to the group and send you a token of our appreciation. Contact Jordan Calaway at [jcalaway@brpfoundation.org](mailto:jcalaway@brpfoundation.org) or (866) 308-2773, ext. 245.



Jim & Linda Barber  
Beth Bartholomew &  
Susan Hurrell  
Diane & Joe Bastian  
Pat & Jim Bayer  
James Beach  
Bert Bennett &  
Elizabeth Townsend  
James Bent  
Sara & Robert Billington  
Lou & Sara Bisette  
Teresa Blanc  
Mary & Raymond Boardman  
Bryan Brothers  
Dan & Linda Brown  
Loren & George Brown  
Mary V. Brown  
Adrian Brown & Keith Flynn  
Beverly & David Brunson  
Sara J. Capps  
Hobie & Addie-Lou Cawood  
Lin & Daniel Celoni  
Claire & Hudnall Christopher  
Lynn & William Clark  
Kerr, Tori, Will & Robert Collins  
Sally Cone  
Ceasar Cone  
Janice & Ed Conroy  
Kenneth Couch  
Roy Crouse  
Deborah Dagenhart  
Allison & Ryan Danell  
Diane Daughtry  
Terry Davis & Gail Hyde  
Michael Deane  
Penny & Bill Dickason  
Kay Donahue  
Frank & Mary Cain Driscoll  
Clara & Jim Duggins  
Susan & John DuPree  
Susan & Harvey Durham  
Joanna Easter  
Melissa & Mark Edwards  
Jeffrey Eidson  
Miles & Millicent Elmore  
Janet & Ed Ernst  
Mark & LaVonda Everhart

Nasrin Falsafi  
Sue Fernbach & James  
Rishebarger  
Elizabeth Fox  
Connie & Alan Fruehan  
Michael Garten & Betsy  
Kusenberg  
Gene Gluchowski  
Hannah & David Gray  
Tim Gupton & Brent Moore  
Barbara & Rusty Hall  
Karen Hammett  
James & Barbara Harrell  
Nancy Harris & Richard Pardue  
Grant Hellyer & Carl Gibbons  
Kay & Rick Herndon  
Robert Hess  
Larry Higdon  
Rick Hodgins  
Mary Anne Howard  
Cindy & Carl Hutchins  
Jane & Ed Isbey  
Thorunn Ivey  
Bill Jacobs & Susan Posey  
Sally & Ronald Jamieson  
Peter Jonas &  
Kathleen Anderson  
Jane & John Jonkhoff  
Pam & Frederic Kahl  
Miriam & Steve Kimsey  
Philip & Louise Kinken  
Douglas Kivett  
Becky & Dudley Lehman  
Donald Lendle  
Sherry & Tommy Lott  
J. David & Doris Asbury Luening  
Jim & Mary Allen Martin  
Sally Mason  
Pat Mauldin  
Dr. & Mrs. Kenneth Maxwell  
Barbara & A.J. McClure  
Kiran Mehta  
Carolyn Miller  
Julie H. Moore  
Melanie & Brock Moore  
Jennie Sue Murdock

John Nolan & Lynda  
Zimmerman  
Melinda & Jim Ogburn  
Minghui & James Patterson  
Betty & William Patton  
David Peeples  
Wilmer Perry  
Traci & Richard Rate  
Martha & Thomas Reddeck  
Liz & Tom Redding  
June Reeves  
Chip Register  
Scott Ritchie  
Walter Rose, Jr.  
Sitaramaraju Rudraraju  
Alex & Michelle Schenker  
James Schoenberger  
James Schreiber  
Mark Schuler  
Kim & Ken Schultz  
Sharon Sigmon  
Nancy Simpson-Banker &  
Stephen Banker  
Laura Smith  
Eva Snapp  
Randall Sparger  
Kimberly & Lee Spencer  
Lisa & Gary Stewart  
Mary Stewart  
Paula Stober  
JoAnn & Bruce Stonestreet  
Mr. & Mrs. Wesley W. Sturges  
Donna & Bryan Summers  
Ronald Swenson  
James & Jacquelyn Taggart  
Cantey & Jim Tanner  
Ginny & Hal Tarleton  
Arlene Edwards Thompson  
Annette & Paul Turner  
Virginia Vanstory  
Diane & Robert Weaver  
Ann & Peter Weigl  
Jan & John Wessell  
Terry & Carolyn Wiley  
Pam Willard  
Richard Williams  
Pat & William Williamson  
Barbara Wilson  
Sandra & Larry Winecoff  
Sharon Winters & Kendall Reid  
Jolene & Gary York  
Mr. & Mrs. Hilary Zaunbrecher

**\$250-\$499**

Anonymous  
Michael Adams  
Allene & James Adams  
Gayla & Chuck Adams  
Lewis Addison  
Lucy & John Aldridge  
Madeline Allen  
Suzette & Michel Allen

Betty Anderson  
Paul Anderson  
Paula & David Applegate  
Adair Armfield  
Lee Armstrong & Mike Lumpkin  
Thomas Avery  
William Baird  
Carol Baird  
Fred Barbour  
Mark & Marianne Barnebey  
Robin & Dave Barnes  
Tiffany Barr  
Carol & Clarence Beaver  
Alex & Anne Bernhardt  
E. Sue Bernie  
M. Hunt & Mary Berryman  
Carol & Bob Black  
Candace Blanco  
Peggy Bogardus  
Katy & William Bolton  
Barton Brass  
Scott Brewington  
Theresa & Billy Brockway  
Kathy & Dan Brooks  
Ann Browning  
Lou & Andrea Bruns  
Kim & Mike Burchell  
Greg Burcher  
Robert Burns  
Margaret Burroughs  
Patricia & Jim Butler  
Carolyn & Russell Butler  
Lowell & Iris Caldwell  
Paul Carpenter  
M. Louise Caudle  
Waldemar & Beata  
Chrostowski  
James Clark  
Julie Clark  
Karen & George Clarke-Riordan  
Roger & Debora Collins  
Terri Cooper  
Amy & Mike Copley  
William & Owene Courtney  
Jim & Shelia Deal  
Andrea Debevoise  
Joseph & Nancy DePippo  
Tony & Gaye Dickinson  
Judy & Mike Duncan  
Malcolm & Susan Duncan  
Dan Dunlop & Scotti Harwood  
Chris Dunphy  
G. Harry Durity  
Ken & Cindy Easter  
Steve & Andy Edwards  
Rebecca Elderkin  
Richard Emmett & Kim Lawson  
Kathryn & David Ervin  
Gary Evans  
Erika Fant & Quinn Lundquist  
Robin & Martin Fennema  
Elizabeth Fluck

## LASTING IMPACT

# Connie Boylan's Kids in Parks legacy

We're so grateful for the many people, who over the last 25 years, chose to make bequests to the Foundation and become members of The André Michaux Society. Each has created a legacy that lives on in the national park and Blue Ridge Mountains.

Years ago, we wrote about one special member, Connie Boylan. She discovered our Kids in Parks program by attending a ribbon-cutting ceremony in 2010 for a TRACK Trail in Pisgah National Forest. During the event, Connie learned how the program introduced kids and families to nature through activities. Inspired by trips to national parks in her youth and a love for the Blue Ridge Mountains, she became a dedicated supporter of our mission to connect children with the outdoors.

"The mountains had become such an important part of my life that I wanted others to feel that connection, too," Connie said.

Sadly, Connie passed away in 2020. However, because of her generous bequest to the Foundation, her legacy will live on through the connections and memories young people make while exploring the mountains and beyond.



*Former Parkway Superintendent Mark Woods with Connie Boylan at Graveyard Fields.*

Shortly after her first TRACK Trail visit, she recognized the amazing difference she could make, saying, "To expose the beauty and wonderment of the outdoors to children is such a gift to give a child that lasts a lifetime."

Linda Foreman  
Linda & Donald Frey  
W. Erwin & Nancy Fuller  
Marsha Fuller  
Gail Garbo  
Ray & Jane Garland  
Terry Gentry  
George Georges  
Kristin & John Gibson  
Russell Gill  
Robert & Maryellen Goodlatte  
Amanda & Christopher  
Goodson  
Phillip & Marjorie Goshert  
Claude & Elizabeth Grasperge  
Maurie Gray  
Laurie Greenberg  
Judy Greene  
Velva & Gordon Groover  
Barbara Guidos  
April Guinchard  
Jordan Gwynn

Angela & Todd Hady  
David & Angela Hamilton  
Wendell Hart  
Marshall & Ann Hass  
Ann Heintel  
Peter & Diana Hellebush  
Kate & Roger Henry  
Tom Hensley  
Miriam & Thomas Herin  
D. Roy & Kathleen Hershberger  
F. Staley Hester  
Marcus H. Hester  
Lauren Hilan  
Mary Hinkle  
Darrell Hinklin  
Pamela Hollifield &  
Scott Montgomery  
Teresa & John Horan  
Kathy Howard  
Victoria & Rogers Howell  
Susan & Paul Hubbard  
Franke Huffman

Vivian Hume  
Paula Hunt  
Gayle & Joe Intag  
George Jamesson  
William & Karen Jelochen  
Kenneth & Norma Jenson  
Van & Margaret Joffrion  
Ellen & Charles Johnson  
Gary & Sandy Johnson  
Judy Johnson-Paonessa  
Nancy & Don Joines  
Michael Jurkow  
George Kegley  
Frank Kenny  
Lynn Killette  
Ed Kinnier  
Ingrid Kraus  
Kathryn Lane &  
Thomas Fillenwarth  
Eric Lanier  
Lynn & Herbert Lawton  
Jack & Barbara Lockhart

Matt & Lale Lovell  
Sarah & Kirk Ludwig  
Isabella Marko &  
Elizabeth Marko  
Melinda & Daniel Marshburn  
Barry Martin  
Cindy & Tom Matthews  
Monika Mayr  
Del McAdams, Jr.  
Marcia McCall  
Melanie McCall  
Donna & Andy McClure  
Margaret & Mark McColl  
Lisa & Andrew McDougald  
A. Ward & Liz McKeithen  
Anne McKenzie  
Phillip & Beverly McKinney  
Connie & John McLendon  
Carol & Richard McNeel  
Randy & Kristen McNeill  
John McSwain  
Paul & Marcia Meis

# RESTORED STRUCTURES

*Humpback Rocks Farm • Mabry Mill  
Johnson Farm • Polly Woods Ordinary  
Sharp Top Shelter • Flat Top Manor*

Ralph Melbourne  
Claire K. Melton  
Kent & Judy Mergler  
Diane L. Mescher  
Jodi Mescher  
Tamara Michael  
Rebekah Miel  
Susan Mihara  
Randy Mills  
John & Stephanie Mitchell  
Donna Mitchell  
Janet Montgomery  
Benton & Rebecca  
Montgomery  
Susan Moore  
Judy & Glenn Morris  
Frank & Jane Murden  
Larry & Nanci Tolbert Nance  
Peggy & Robert Neal  
Sharon Newman  
Lloyd O'Brien  
Diane & Bradley Ogg  
Nikki Orié  
Chet & Sharon Osborn  
Ever & Jonathan Owens  
Anne & Dan Page  
John & Lynette Parker  
Matthew Parrott  
Karen Patton  
Audrey & Stuart Pearson  
Caroline Peck  
Sara & Edward Penn  
David Pitser  
Judy & Rodney Poole  
Carl & Mary Porter  
Janet & Les Pratt  
Bonnie Prisk  
John Pugh  
William Raleigh  
Michael Rankin  
Missy & Sam Rankin  
Kerri Ressemeyer  
Alexis Richards  
The Rickey Family  
Frank Robards  
Barbara Robinson  
Russell & Sally Robinson

Ernest Rogers  
Vera Rooker  
John & Jill Rose  
Julee & Bill Rose  
Carol & Michael Rosenblum  
Laura & Reid Russell  
Anna Lou Schaberg  
Nancy & Richard Scheaffer  
Ralph Schiefferle &  
Elizabeth Perkins  
Marian Selby  
Waid & Babbie Shelton  
Brenda & Bob Shepherd  
Janet Sherrill  
Raleigh & Katy Shoemaker  
Patrice & Allen Sigmon  
Georg Simon  
Kelly & Linda Skillett  
Marilyn Smith  
Linda Snow  
Martin Sohovich  
Albert Somers  
Hope & Chris Squires  
Gregory Starks  
Dawn Starks  
Sandra Steele  
Bob Stepno  
Susan & Dwain Strader  
Jesse W. Strange, Ret.  
Judie Swain  
Nancy Swonger  
Deborah Thomas  
Suzanne Thorniley  
Claire Tiernan  
Earl Trevathan  
Vicki Troutman & Mary Tucker  
Susan & Richard Tumbleston  
Jason Urroz & Jenny Ung Urroz  
Nan Van Hoy  
Tom & Elizabeth Vasiliauskas  
Kathi Vaughan  
Alexa Viets  
Charlotte & Fred Voreh  
Kirk Wagner  
Penny Weber  
Ron & Tricia Wells  
Buddie Wetli

Brenda Wey & John Fillinger  
Vicki & Eric Wheeler  
Judy & Bob Wicker  
Karen & Gary Wiegner  
Kenneth & Connie Williams  
Elizabeth Wilson  
Esther Wolf  
John Woodell &  
Michelle Prysby  
Kent Kozar & Erin Wuebbens  
James Young & Carol Marchel  
Barbara & Al Yurkshat  
Suzanne Ziemke  
Barbara & Tom Zimmerman

## **Blue Ridge Music Center 2021 & 2022 Members**

### **Benefactors (\$1,000)**

Dale Allison  
Victoria Lindberg  
Russ & Nancy McDaniel  
Bebe Purcell

### **Patrons (\$500)**

Ross Allen  
Roy Crouse  
Michael Deane  
Douglas Kivett  
David Lynch  
Chuck & Debbie Miller  
Cindy & Jerry Nelson  
Steven Saylor  
James Schoenberger  
Tracy & Barbara Wilkerson

### **Promoters (\$250)**

Gary Evans  
CW Wenzel

## **Honors**

*Those honored are listed in bold. Donors are listed below. (Gifts from October 1, 2021 - September 30, 2022)*

### **Alfred Adams**

Charles & Susan Hauser  
Tom & Megan Lawson  
Penny & Samuel Rothrock  
**Jimmie Darrow Albright**  
Suzan Albright & Tim Smith  
**Beth & Guy Ammirati**  
Pam Willard

### **Becky Anderson**

Harris Prevost  
**Jeremy & Riley Andrews**  
Pat Andrews  
**Nancy & Glenn Arndt**  
John & Sandy Townsend  
**Doyle Barksdale**  
Comer Buck

### **Amy Pitser Barnhardt**

David Pitser  
**Rebecca Barnhardt**  
Roland & Emilie Barnhardt  
**Roberts Bass**  
Tom & Megan Lawson  
**Jack Betts**  
Richard Emmett & Kim Lawson  
**Barbara & Richard Bevington**  
Susan & Harvey Durham  
**Dr. Alice Bishopric**  
Betsy Sigmon  
**Frances Blickenstaff**  
Gayle Wellborn

### **Blue Ridge Parkway Foundation Team**

Becky Anderson  
**Julie Bostick**  
Welch & Sara Jane Bostick  
**Nick Bovino**  
Elizabeth Green  
**Dr. & Mrs. Edwyn T. Bowen, Jr.**  
Martha Bowen Sarcone  
**Leesa Brandon**  
Laura Boosinger  
**Nick Boyd & Kelly Breeney**  
Maurya Boyd  
**Don & Shirley Brown**  
Whitney Brown  
**Nathan & Thomas Bryant**  
Miriam & David Bryant  
**Nancy Buchanan**  
Loren Buchanan  
**Ashton & Madison Burkhart**  
Keith & Mandi Burkhart  
**Joanne Burns**  
Robert Burns  
**Benjamin Lee Bushyhead**

### Jean Bushyhead

**Mary Jane Carmichael**  
Annie & Gordon Jenkins  
**Julie Cashman**  
John & Sandy Townsend  
**Christine Castelloe**  
Lyle Adams

### **Ken & Christine Castelloe**

### **Celebrating our Anniversary on the BRP!**

Tim & Julie Bertram  
**The Cherokee Nation**  
Dr. Eric Wilsnack  
**Our children**  
Georgina Bruce & Sally  
Bruce Withers  
**Patricia Clark**  
Jo Hennelly  
**Richard V. Clark**  
Martha C. Brimm  
**William & Lynn Clark**  
Charles & Isabel Ernst



**Frank Clements**

Teresa &amp; John Horan

**Beth Coco**

Kay Yeakel

**Hattie Collins**

Anonymous

**Owene Courtney**

William &amp; Owene Courtney

**The Crazy Eights**

Laura H. Bridges

**Ronald J. Davis**

Evalynn Davis

**Evalynn Davis on her birthday**

Ronald Davis

**Carol Deal**

Judy Trimble

**Anne Denton**

James &amp; Dawn Brannon

**Judy & Mike Duncan**

Vicki Troutman &amp; Mary Tucker

**Carolyn Durham**

S. Bryan &amp; Carol Anne Durham

**Fritz & Bev Earle**

Allan Starnes

**Evan C. Earle, Jr.**

Marion Yongue

**Virginia Easter**

Joanna Easter

**Richard Emmett**

Patrice &amp; Allen Sigmon

Vicki Troutman &amp; Mary Tucker

**Dr. Steve & Mrs. Linda****Erlandson**

James &amp; Barbara Harrell

**Hack, Keleher & Scroggs****Families**

Jamie &amp; Skip Walter

**Ely Gail Farmer**

Anonymous

**Mike Faurote**

Jennifer Faurote

**Callum & Lorraine Fife**

Jim &amp; JoAnne Murray

**David Soyers & Mark File**

Denny &amp; Patty Keeney

**Eric VanNewkirk & Kat Finger**

Ruthie VanNewkirk

**Linda Foreman**

Matthew Foreman

**Douglas Forsyth**

Anonymous

**Sammie Friday**

John Tutwiler

**Lauren Fritzsche**

Bryson Formaggioni

**Nancy Garrett**

Martin Properties

**Will, Hazel, Luke & Emory****Garrison**

William &amp; Mary Garrison

**George Georges**

Karen Donovan



Sunset over Blue Ridge Mountains. Photo by Clark Wilson

**Noah Gettings**

Kathryn Smith

**GFWC of NC**

Elbert &amp; Julene McPhaul

**Mary & Frank Giacomucci**

Allison McEntee &amp; Matt Wilson

**Leigh & Billy Giles**

John Pugh

**Tom Gonzalez**

Thomas Gonzalez

**Our grandchildren**

R. Balfour &amp; Emily Sartor

**Ann Gray**

Sara Gray

**Oakley McKenna Griffin**

Kimery Braxton

**Mary Jean Grose**

Jonathan &amp; Karen Kollar

**Arleen L. Hanchey**

C.S. Hanchey

**Elizabeth B. Haynie**

Anne Farmer

**Richard Hodgin**

Virginia Hackworth

Page &amp; Ed Kluttz

**Ms. Effie Hondos**

Paula Hunt

**Billie Brandon Howell**

Barbara M. Scott

**Diane & Al Hubbard**

Elisabeth Lane

**Olson Huff, MD**

Robert &amp; Rebecca Schwartz

**Ms. Heather Hunt**

Paula Hunt

**Thomas & Victoria Hunt**

Jane Caviness

**Robbie & Dave Irvin**

Julia Miley

**Elaine R. Jack**

Vera Rooker

**Annie & Gordon Jenkins**

Mary Jane Carmichael

**Murrell Johnson**

Ken &amp; LaVerne Davis

**Judy & Ken Joines**

Nancy &amp; Don Joines

**Jennifer Jones**

Joan Davenport

**Kayla**

Burton &amp; Christine Evans

**Patricia Keefe**

Linda &amp; Duncan Rose

**Charlie Keiger**

Betsy Keiger

**Marianne Kovatch**

Vicki Troutman &amp; Mary Tucker

**Katherine Kransteuber**

Lindley Curtis

**Olga M. Kripner**

George Kripner

**Jennifer Kuntz**

Marc Richards

**Whei-ing & Ming Land**

Susan &amp; Harvey Durham

**Lem & Lib Laney Family**

Frank Laney

**Bob Lassiter**

Ann Mills Lassiter

Robert Lassiter, Jr.

**Blanche, Cesar & Sarah Leon**

Sue &amp; Cesar Leon

**Joselyn, Brianna & Bella**

Sue &amp; Cesar Leon

**Patrick Long, Olive Shertz-Long**

&amp; Jameson Long

Jana Chamberlin

**Ellen Lyle**

Kent Lyle

**Leonard P. Lyons**

Mibbs Lyons

**Jennifer Manning**

Jane Harkins

**Dave Martin**

Anne Simcox

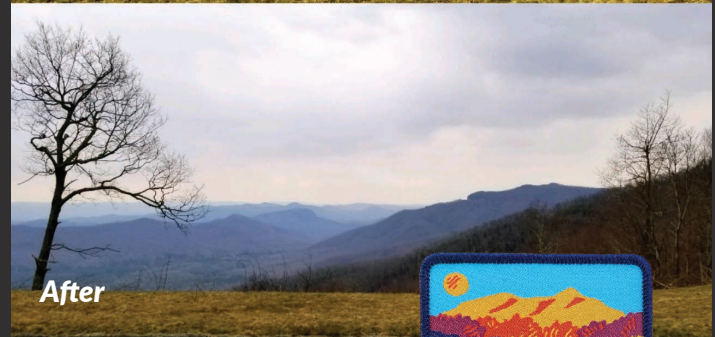
# Trails & Views Forever

The Trails & Views Forever program was launched to provide funding for repairs and rehabilitation of trails, overlooks, campgrounds, and picnic areas along the Parkway. Donors who designated a gift of \$1,000 or more became Founding Funders.

Thanks to support at every level, we have raised nearly \$1.5 million. Today, when you give \$1,000 or more to help us reach our next million-dollar milestone, you can become a designated Trailblazer and receive a patch. We would like to thank the following individuals who have taken part in this program. Donors who are both a Founding Funder and a Trailblazer are marked with an asterisk.\*

Anonymous  
Anonymous Trust  
Alfred & Beth Adams  
Bridgett Aguirre  
Norman & Linda Aldridge\*  
Mary Allen  
Becky Anderson  
Chip Anderson\*  
Carol Baird\*  
Baptist Emergency Department  
Jim & Linda Barber  
Peter & Jean Anne Barnes  
Laura & William Barrier  
Beth Bartholomew & Susan Hurrell  
Joe & Diane Bastian  
Larry Beamer & Deborah Haynes  
Tim & Julie Bertram  
Jack & Martha Betts  
Jim Blose & Sarah Ruben  
Hanes & Lida Boren\*  
Larry Bradley  
Martha Brame  
Dan & Linda Brown  
Mike & Clarkie Brown  
Mark Buff  
Laura Bulson  
The Mary H. Cain Foundation  
David & Teresa Campbell  
Brian Carlton & Elizabeth Sumpter  
Julia Carpenter\*  
Peggy & David Carr  
Hal & Beth Carson  
W. Lee Carter, III  
The Carter Family

Ken & Christine Castello  
Daniel & Lin Celoni  
Munroe & Becky Cobey\*  
Gay Coleman  
James Coleman  
Robert & Kathleen Connelly  
Kathy & Kenny Conti  
John & Faye Cooper  
John Crosland III Charitable Foundation  
Martin & Ginger Curry  
Andrew & Janice Cwalina\*  
Marcy & Bradley Daniel  
Terry Davis & Gail Hyde  
H. Leigh & Jennie Derby\*  
Cynthia Dillon  
Dillon Family Foundation  
P.K. & Ron Donson  
Elyn & Michael Dortch  
Bob Drennan  
Mitchell & Polly Dunn  
Susan & Harvey Durham  
Edward Emery  
Nathan & Jane English  
Jerry & Janet Enos  
Eurosport Asheville  
Mark & LaVonda Everhart  
Thomas Fisher, III  
James Fulton  
Estate of Roy M. Gallagher, Jr.  
Garrett Family Ever Forward Foundation\*  
John & Janet Garrett  
Sabrina Gibson  
Kelly & Meredith Graves  
Eugene Grecheck  
Daniel & LaGena Greene



Wes Greene  
Larry & Joyce Greenwalt  
Pete & Linda Hall  
Neal & Jewel Hamlett  
Karen Hammett  
John W. & Anna H. Hanes Foundation  
Hanna Foundation  
Karen Harding  
Carolyn Hart & Sandy Godwin  
Amret & Wesley Hawfield\*  
Betty & Keefe Hayes  
Lynda Healy-Rejkowski & Don Rejkowski  
Hemlock Inn  
Chris & Debbie Herbert  
David Herbert  
Vickie & Charlie Hester  
Lauren Hilan  
Richard & Mary Hill  
Bill & Dee Hilt\*  
Daniel Hilton\*  
Susanne Hite  
Rick Hodgins  
Carol & Lynn Hogue & Lizzie Outerbridge  
Steve & Bridget Holcombe  
John & Denise Holden  
Phyllis & John Holmgren  
Honeysuckle Court, LLC-Mehl, Boteler & Almand  
Leanne Hopkins  
Morgan & Jack Horner  
Billie Brandon Howell\*  
Richard Ikenberry\*  
Joe & Gayle Intag  
Ed & Jane Isbey

Thorunn Ivey  
Steve Johgart  
Maxine Johnson\*  
Philip T. Johnson, DVM  
Robert Jones  
Bill & Sue Jones  
George Kegley  
Bill & Judy Kendrick  
Mary C. Kilpatrick  
John Koenig\*  
Pamela Britton Kolb  
Kathy Kueider  
Kulynych Family Foundation II, Inc.  
George & Kristy Lampe\*  
Scott & Deanna Lampe  
Bob & Jane Lassiter\*  
Jane Ledbetter  
Donald & Sandra Leslie  
David & Glenda Lewis  
Bob Livingston  
Raymond & Jodi Lockwood  
Ann B. Long  
Kim Long  
Beth Lotspeich  
Rick Lotz  
Joseph & Lu Ann Love  
William & Susanne Lovelace  
Anita H. & John J. Lupo  
Pat Mauldin  
Catherine Mauro  
Emi & Gibson McCall

Diana & Mike McClinton  
 Judy & Warren  
 McCormick  
 Michael & Rebecca  
 McCracken  
 Lisa & Andrew  
 McDougald  
 Jim & Deborah  
 McDowell  
 Anthony & Patricia  
 McLean  
 Diane L. Mescher  
 Tom & Pam Metz  
 Nancy Michael  
 Ruth Ann & John Miller  
 Lee H. Minor  
 Donna Mitchell  
 Janet W. Montgomery  
 David & Julie Moore\*  
 Julie H. Moore  
 Morningstar Foundation\*  
 Parker & Deborah Myers  
 Anna Nagy  
 Lynn Nash & Katie  
 DeJarnette  
 Jim Newlin & Silvie  
 Granatelli  
 Peter & Kelley Newsome  
 Jane & Tom Olsen  
 Adam & Connie Ortiz\*  
 Diane & Eric Overcash  
 Robert Palmer  
 Eric & Kristina Paltell  
 Leslie Paul  
 Benjamin & Peggy Payne  
 Larry Pearce  
 T. Pennington Art  
 Gallery, Inc.  
 Carol B. Phelon  
 Foundation  
 Clifford & Bobbie Phillips  
 Linda Phillips  
 Woody & Bobbi Poor  
 Christopher Puin  
 Teri & Tony Puleo  
 Barbara Quickel  
 Jerry & Beth Redmond\*  
 Rebecca Reeve  
 Carol & Dave Reger  
 Family  
 John Rendleman\*  
 Randall, Marilyn, Patrick,  
 & Tucker Renegar,  
 Holly Jolly  
 Pete & Kay Ritcher  
 Ann Robertson  
 John & Jill Rose  
 The Rosemyr  
 Corporation  
 Tom & Susan Ross  
 Lori & Tim Rowe\*  
 Joseph & Nancy Roy  
 Alan & Sherrie Schork

Edward Scott  
 Anne Seawell  
 Barbara & Larry Settlemyre  
 Miriam Sexton  
 Raleigh & Katy Shoemaker  
 Marcus Simpson &  
 Marilyn Westphal  
 Perry Simpson\*  
 Kelly & Linda Skillett  
 Sherwood & Eve Smith  
 Thomas Smith, Jr.  
 Walt & Sharon Smoski\*  
 Randall Sparger  
 Fred & Alice Stanback\*  
 Myles Standish &  
 Shelley Crisp  
 Genie & Jerry Starnes  
 James Stephens &  
 K. Ann Berry  
 Gary & Lee Anne Stiffler  
 Ray Stone  
 William & Cathy Stone  
 Bob & Janet Stout\*  
 Charles & Mary Lois  
 Strickland  
 James & Kimberly Strong  
 Julie & Les Taylor  
 Cynthia & Bill Tessien  
 Claudia Thomas\*  
 Philip & Virginia Thomas  
 Tim Thomas  
 Arlene Edwards Thompson  
 Sterling Vestal  
 Edward Walker  
 Terri Waller\*  
 Mike & Hannah Ward  
 Bill & Judy Watson  
 H. Thomas Webb &  
 Kathryn Heath  
 Kirby & Gloria Werninck\*  
 Carol Westmoreland  
 Dermot Whelehan  
 Wicked Weed Brewing, LLC  
 Terry & Carolyn Wiley  
 J. Tracy & Barbara Wilkerson  
 John Williams  
 Williams Family Foundation\*  
 Willow Branch Foundation\*  
 Deborah & Ken Wilson\*  
 Brad & Carole Wilson  
 Tom & Candy Wood  
 Bruce & Luci Wright  
 Michael & Linda Zagorac  
 Nancy & Steve Zuk

**Frank Martin**  
 Patrice & Allen Sigmon  
**Fred Martin**  
 Michelle McCubbins &  
 Carol McCubbins  
**Matthew & Briana**  
 Cathy Marcum  
**Cindy Mauney**  
 Scott Mauney  
**Mr. & Mrs. Ronald O. Mays**  
 Alexis Richards  
**Dietrich & Jennifer McCall**  
 Emi & Gibson McCall  
**Emi & Gibson McCall**  
 Ginny & Hal Tarleton  
**David McClintock**  
 Ellen Easter  
**Mr. & Mrs. Derry McCormick**  
 Sarah & Frank McLane  
**Lauren McDowell**  
 Barringer Construction  
**John McGowan**  
 Margaret & Mark McColl  
**June McNeil**  
 Rick Brown & Carole  
 Campbell-Brown  
**Houck Medford**  
 Robert & Rebecca Schwartz  
**Military & All First Responders**  
 Michael Presby  
**Momma**  
 Hannah Massey  
**Wynne Morris**  
 Alex Devon  
**Susan & Norwood Morrison**  
 John Pugh  
**Emyla & Ellison Jacob (EJ)**  
**Morton**  
 Bryan & Detra Morton  
**Brian Munzer**  
 Brent & Lee Ann Russell  
**William Floyd Myers**  
 Allison Feinmel  
**Ellen R. Myrick**  
 Jane Clark Moorman  
**Valerie & Alan Nelkin-Cohen**  
 Steve & Eva Scholfield  
**Elaine & Kenneth Nelson**  
 Nancy & Don Joines  
**Jim Newlin**  
 Suzan Albright & Tim Smith  
**Louise S. Nezelek**  
 Kurt & Betty Telford  
**Michelle Novacek**  
 Richard Sparks  
**David Orbaugh**  
 Tamara Wilson  
**Louise Owen**  
 Ed & Janice Conroy  
**Fran & Trey Page**  
 Gary & Lee Anne Stiffler

**Kristy Pardue**  
 Del McAdams, Jr.  
**The Parkway's Birthday -  
 87 Years**  
 Patricia Johnson  
**All the trips made on  
 the Parkway**  
 Jay Lathrop  
**Valerie Patenotte**  
 Anonymous  
**The people who maintain &  
 create trails**  
 Ed & Jane Isbey  
**All persons who help maintain  
 this magical parkway!**  
 Tibor & Jo Jean Deak  
**Kelsey & Nathan Poole**  
 Rodney & Judy Poole  
**Michael & Vicky Pratt**  
 Sharon Applegate  
**Dub & Brett Prichard**  
 Amber Prichard  
**John Quigley's birthday**  
 Lisa Friedenbergl  
**Mrs. Annette S. Quint**  
 Laurie Quint-Adler  
**Jon & Vicki Radford**  
 Anne & Phillip Wilson  
**Karen Rand**  
 Jim & Shelia Deal  
**Andrew Rice**  
 David Rice  
**NPS Ranger Chuck Robertson**  
 Susan, Lauren & Anthony  
 Scardella  
**Ted & Judy Roeling**  
 Kelli Rogers  
**Kathryn Fisher Rubbins**  
 Thomas Fisher, III  
**Joseph & Winifred Rush**  
 Laura & Gene Beasley  
**Karen & Gary Sain**  
 Lisa & Terry Jennings  
**Marlene & Nathan Sanges**  
 Nancy & Don Joines  
**Mary & Jerry Schleibaum**  
 Peggy Lenhart  
**Mr. & Mrs. Jim Shannonhouse**  
 Patricia Carter  
**Paul Silverstein**  
 Mitzi Silverstein  
**Dotty Smith**  
 Helen Johnson  
**Elizabeth Fisher Smith**  
 Thomas Fisher, III  
**Robbin VanNewkirk &  
 Matthew Solariski**  
 Ruthie VanNewkirk  
**Ike Southerland**  
 Gwynne Chadwick  
**Susan & Darrell Sparks**  
 Nancy & Don Joines

# Parkway Protectors



By committing to a monthly donation, Parkway Protectors play an essential role in sustaining the Foundation's mission to protect the 469-mile scenic route. We hope that you will join this growing group of steadfast supporters. Your gift is where the Parkway's future begins.

Anonymous  
James & Allene Adams  
Lewis Addison  
Rance Allen  
Ed Anderson  
Mark Anderson & Michelle Fitzgerald  
Thomas Avery  
Katelyn Avots  
Cynthia Billings  
Candace Blanco  
Charlie Blevins  
Daniel & Pamela Bowden  
Chris Breeden  
Theresa & Billy Brockway  
Whitney Brown  
Robert Burns  
Margaret Burroughs  
Hal & Melanie Campbell  
Ken & Christine Castelloe  
Terri Cooper  
Zachery Cooper  
Amy & Mike Copley  
Cynthia Covington  
Martin & Ginger Curry  
Karen Dahlgren  
Jim & Shelia Deal  
Frank & Donna DiMario  
Erika Fant & Quinn Lundquist

Kristen Faye  
Elizabeth L. Fenwick  
Sharkbite Freidenstein  
Terry Ellen Garber  
Russell Gill  
Raymond Goad  
David & Hannah Gray  
Maurie Gray  
Alan Harms  
Allison Harrell  
Christina Helms  
Erin & Paul Hetrick  
Billie Brandon Howell  
Joe & Gayle Intag  
Ed & Jane Isbey  
Martha Jenkins  
Van & Margaret Joffrion  
Daniel Kixmiller  
Michael & Catherine Lamm  
Jay Lathrop  
Neal Leatherman  
David & Glenda Lewis  
Isabella Marko & Elizabeth Marko  
Allison McEntee & Matt Wilson  
Claire K. Melton  
Pat & Harold Miller  
Paula Mitchell  
Julie H. Moore  
Brock & Melanie Moore  
Frank & Jane Murden

Jimmy Obenshain  
Liz Orcutt  
Lee Ann Patterson  
Cynthia Payne  
David Peoples  
Michael Presby  
Raj Rao  
Rebecca Reeve  
Chip Register  
Janet Sherrill  
Marie Silverstrim  
Eva Snapp  
John Speckhard  
Heather Stehle  
Sarah Stroud  
Ginny & Hal Tarleton  
Julie & Les Taylor  
Susan & Richard Tumbleston  
Jason Urroz & Jenny Ung Urroz  
Melissa Williams  
Thomas Williams

**Perry & Charlotte Sprawls**  
Charles Sprawls  
**Jerry Starnes**  
Julian & Jill West  
**Dr. Robert Taylor**  
Anne Farmer  
**Robert M. Taylor**  
Carla Taylor  
**David Temple**  
David Bauguess  
**Cynthia & Bill Tessien**  
Kathi Vaughan  
**Cynthia Tessien**  
Lisa Smith  
**Richard Thomas**  
Deborah Thomas  
**Joy Sutherland & Jean Tiffin**  
Amelia Sutherland  
**Bob & Kay Timberlake**  
David & Meg Hinson  
Mac & Beth Parrott  
**Sandy & Jim Townsend**  
Julie & Donald Cashman  
**Janna B. Trimble**  
Judy Trimble  
**Mary Hawkins & Dennis Vanator**  
Nancy & Don Joines  
**Erica Monette Vargas**  
Wills Combes  
**Nancy Viets**  
Alexa Viets  
**Joe & Beth Vogler**  
Julia Miley  
**Hubert M. Voliva**  
Patricia Davenport  
**Sharon G. Walker**  
Arnold Walker  
**Rita White**  
Missy & Sam Rankin  
**Hugh, Jessica & Anna Willard**  
Pam Willard  
**Lee & Vicki Willard**  
Pam Willard  
**Richard Willis**  
Roberta Willis  
**Carole & Brad Wilson**  
Tom & Megan Lawson  
**Matt & Allison Wilson**  
Kelly Bennett-Unger  
**Samuel C. Wilson**  
Salle Wilson  
**Emory Lee Wilson, II**  
Lori & John Wilson  
**Donna Wise**  
Kelly & John Merritt  
**Bernhard Wolf**  
Esther Wolf  
**Eugenia Wright**  
Alan Smith  
**Chase Alan Yurkshat**  
Barbara & Al Yurkshat

To become a Parkway Protector, visit [ParkwayProtector.org](http://ParkwayProtector.org).

## Memorials

Those memorialized are listed in bold. Donors are listed below. (Gifts from October 1, 2021 - September 30, 2022)

### **Joel Sr & Lois Adkins**

Tim Adkins

### **John Adkins**

Sharon & Ricky Adkins

### **Edith D. Aldridge**

Anonymous

### **Christeena Joy Anderson**

Ed Anderson

### **John David Anderson**

Sharyn Groh

Eleanor & Hal Levine

Adele & Leonard Moffatt

Carolyn & Alan Ward

### **Teena Anderson**

Ed Anderson

### **Michael Richard Andrews**

Rebecca Born

### **William Apple**

David & Donna Huckabee

### **Anthony Arrigo**

Alex & Sandi Garcia

### **James Erwin Asbury & Nesbitte**

#### **Samuel Asbury**

Doris Asbury Luening &

J. David Luening

### **Ronald G. Assid**

Lewis Price Properties, LLC

### **Dick & Jane Auld**

Theresa & Billy Brockway

### **Warren & Iris Austin**

Steve & Janice Austin

### **James L. Avant**

Barbara Avant-Bevington &

Richard Bevington

### **Dick Averette**

Benton & Rebecca

Montgomery

### **Dusty Avots**

Katelyn Avots

### **Patricia Mae Bailey**

Kristen Faye

### **Colleen & Henry Baxter**

Ed & Sherree Menius

### **Elsie Beaver**

Jocelyn Baumgarten

Gayle Miller

### **Pamela Beeler**

Cynthia Covington

### **C.E. Belcher**

Beverly Belcher Woody

### **Jack & Eleanor Benbow**

David & Phyllis Benbow

### **Patricia Bethard**

John McCullough

### **Carl W. Beyer**

Roberta Beyer

### **Andy Bingham**

Caelia Bingham

### **Alma & Gray Bingman**

Austin Hester

### **Ronnie Blanton**

Elizabeth Blanton

### **Michael & Ted Bogardus**

Peggy Bogardus

### **Robert L. Boulay**

Paul Boulay

### **Martin Luther Brackett, Jr.**

Elise & Brian Barksdale

Marlene & Ronnie Batchelor

Doug & Sara Gwynn Brackett

Jan & James Brittain

Chip Clark

Dan T. and Sara Wyche

Coenen

Bob & Barbara Colwell

Elizabeth Cottam

Debra Dawson

Mary Docherty

David Erdman

James Quartermain Freeman

& Laura Freeman

John Garver

Brenda Gibson

Laura Gillikin

Laura & Charles Greer

GreerWalker, LLP

Mary Griesser

Mary Frances Hibbert

David Hood

Elizabeth & Keith Howell

Jennifer Hutchens

Charles Johnson

J. Brent Justus

Sam Kirby

Michael Knowles

Joye & Ron Lamberth

Lowry and Associates, Inc.

McGuireWoods, LLP

Charles McIntyre

A. Ward & Liz McKeithen

Thomas McNeill

Elizabeth & Andrew Miracle

Gina & Pat Murray

North Carolina Railroad

Company

Marcie Shealy

Ray & Joan Sykes

H. Thomas Webb &

Kathryn Heath

Julian Wright

G. Smedes York

### **Uta Brandner**

Harold Brandner

### **Fay Brantley**

Rick Hodgins



"My joyful experiences of the Blue Ridge Parkway are heavily based in Haywood County, N.C., while pedaling a bicycle. We are blessed with magnificent and expansive views like the Cowee Mountains, milepost 430.7, and the Mile High Overlook on the Heintooga Spur Road. The long climbs and descents are a treat. At the slow speed on a climb, it is possible to hear and see more birds and view the plants, trees, and flowers throughout the seasons. Those are the most cherished memories that create a devotion to the Parkway. In 2014, I had the privilege to cycle Skyline Drive and the entire Parkway granting the opportunity to see the many vistas and surrounding environments. To say that we live close to a worldly treasure is an understatement."

- Debbie Wilson, Parkway Steward

### **Jim & Marguerite Brown**

William & Clara Cox

### **Larry Brown, Esq.**

Steve & Patricia Stevens

### **Dylan Charles Bruns**

Lou & Andrea Bruns

### **Sharon Buck**

Dudley Buck, Jr.

### **Kevin Francis Bulson**

Laura Bulson

### **Harold & Lucille Bumgarner**

Brenda Moore

### **Gail Bunn**

Thomas Bunn

### **Jerry Burns**

Janice Burns

### **Joe Cahill**

Jan Cahill

### **Robert L. Cain, Jr.**

Ross Allen

Pamela B. Cain

### **J.C. Canipe**

George & Kim Cobb

### **Robert Canipe**

Martha Canipe

### **Hubert A. Canter**

Richard K. & Carol M. Canter

### **Herbert Carlton, Jr.**

W. Gray Parks

### **Robert F. Carnes**

Karen Demby

### **Donald L. Carter**

Peggy Carter



**Larry Carter**  
Mark & Polly Crowder  
**David Chris Catron**  
Anonymous  
Winfrid Beltran  
Elizabeth Brauer  
Rodney Catron  
Lorna DeMasso  
DRMP, Inc.  
Robert Eads  
Danielle Frink  
Meg, Matt & Malcolm Hoover  
Elizabeth Horgan  
Jeanne Jackson  
Christina Joiner  
Danielle Lopez  
Maitland Wellness Center  
Stephen Oliver  
Teresa & Cliff Peters  
Rick & Donna Rasmussen  
Jennifer Roeder  
Geoff Scales  
Allen Schrupf  
Marilyn Talutis  
Cheryl Tucker  
Jillian & Lindsey Wilder  
Helen Wilson  
**Dianne Catullo**  
Richard L. Catullo  
**James S. Chester**  
Linda H. Chester  
**David Childress**  
Joyce & Cecil Staton  
**Wayne Clark**  
Bebbie Rhodes  
**Barbara Collier**  
Robert Collier, Jr.  
**Martin J. Condon, III**  
Anonymous  
**Charles William Conrad**  
Evelyn & Joe Moore  
**Betty S. Cook**  
Peggy Carter  
**Alford & Dorothea Coseo**  
Claudia C. DeRidder  
**William M. Courtney, Sr.**  
Anonymous

**Steve "Poppy" Covington**  
Sawyer Covington  
**Wesley "Wes" Ross Craver**  
Mickey & Gwen Barnhill  
Robert Breazeale  
Carol & John Cerra  
JoAnne & Howard Comstock  
Pat & John Culp  
Doug & Diann Dreyer  
Mark Dunlap  
Teresa & Anthony Griswold  
Linda & Blair Holden  
Holly Holst  
Suzanne Jenkins  
Jack Kirkpatrick  
Bill Lee  
David Lomax  
Vickie & Jim Long  
Nancy & Joel McIntyre  
Alice McLaughlin Family  
Ava & Sidney Mitchell  
Catherine & Tom Pence  
Frank Prevatt  
Zella & Jerry Settlemire  
Mary & Peter Smith  
Linda Stedman  
Judy Wright  
**Sandy Crossley**  
Andrea Spencer  
**Margaret Becton Crumpler**  
John & Lynette Parker  
**Ruth & Manuel Cunnup**  
Frances & David Cunnup  
**Peter J. Dahlgren**  
Karen Dahlgren  
**Douglas Nesbitt Davies**  
James Colvin Davies  
**Sissie Davis**  
Tibor & Jo Jean Deak  
**Trip Dennis**  
Bucky & Nancy Dennis  
**Warren Cameron Dennis, Jr.**  
Adair Armfield  
Miriam & Thomas Herin  
Marilyn Smith  
Kathy Motsinger

**Thomas "Tom" Dixon**  
William Dixon  
**Aunt Dot**  
Benton & Rebecca  
Montgomery  
**Claude Thomas Doughton, Jr.**  
Gayle Doughton  
**Frank Downs**  
Ken & Cindy Easter  
**Maude Downs**  
Ken & Cindy Easter  
**Paul A. Doyle**  
Elizabeth Doyle  
**Jo Duncan**  
Grady Duncan  
**Howard S. Dye**  
Barbara Robinson  
**Janice Smith Eanes**  
Benny & Carolyn Eanes  
**Parks Easter**  
Ken & Cindy Easter  
Joanna Easter  
**Steven R. Eberhardt**  
Polly Eberhardt  
**June & Joe Eby**  
Emily Eby  
**Zell Marks Eckert**  
Patrick & Cecelia Marks  
**Christopher Eno**  
Frederic Eno  
**Gary Everhardt**  
Nancy & James Creel  
**Brenda Evers**  
Jane & James Hall  
**Charles J. Fant**  
Erika Fant & Quinn Lundquist  
Patty Fant  
**Mr. & Mrs. Bud Faw**  
Gary & Jolene York  
**Betty Jean Feamster**  
T. Crawford Honeycutt  
**Henry H. Ferguson**  
Sharon & James Hutchens  
**Robert Field**  
Thomas Fisher, III  
**Tom Fields**  
Robert Stickley  
**Harry T. Fleck**  
Veronica Fleck  
**Donald Stephen Foster**  
Maurine Huang  
Jessica Lee  
Jessica Peeples  
**Nancy Parker Foster**  
Ali Foster  
**Mary Ann Foust**  
Lisa Helsel  
**Mary Fraizer**  
Dan McLawhorn  
**Robert Franklin "Frank" Freeman, Jr.**  
Leah Barr

Laura Freeman  
Lisa Karolewski  
Edith Patton  
**George Homer Frye**  
James Srebro, MD  
**Babe & Billy Fuller**  
Marsha Fuller  
**Aaron & Sarah Gabriel**  
David & Debbie Gabriel  
**Charles Aaron Gabriel**  
Andy Gabriel  
**Sarah & Gabe Gabriel**  
David & Debbie Gabriel  
**Michael Anthony Gallucci, Jr.**  
Leigh Ann Gallucci  
**Albert R. "Ron" Garber**  
Terry Ellen Garber  
**Hayleigh Elizabeth Gibson**  
Elizabeth Slaski  
**Ray Goad, Sr.**  
Raymond Goad  
**Skip Goree**  
Renee & Roger Alexander  
**Matthew Graham**  
Rosalie Wells  
**My grandparents**  
Shelley M. Green  
**George W. Greene**  
Stuart Gale  
Gabriella Greene  
**Michael Gregory**  
Ed & Denise Gregory  
**Frank & Ginny Guertler**  
Andrew & Teri Guertler  
**Mary Guynn**  
Betty & William Patton  
**Lisa H. Hagebak**  
John McCraw  
Gregory Starks  
**Edwin "Ed" Baxter Hall**  
Catherine Barnett Wilson  
Hildy Bowbeer  
Miggie Cramblit  
Nancy Etwiler  
Peggy K. Hall  
Mark Johnson  
Sally Johnson  
Sarah Kane  
William Lucente  
Katie Martin-Browne  
Mary Mathisen  
Mr. & Mrs. Charles W. Miller  
Mina Miller  
Susan Moriarity  
Joe & Denise Otterstetter  
Quaker Gap Baptist Church  
Maralee Savage  
John Scanlon  
Ken & Cynthia Sevier  
John Ursu  
Linde Vacho  
Bryan Washburn

**William Ray Hall**

James &amp; Madeline Lloyd

**Perry Hamblin**

Anonymous

**Mildred Hamelink & Ken Bremer**

Brian DeCann &amp; Pamela McCarrick

**Edna Mae Hamilton**

David &amp; Angela Hamilton

**Chuck Hammersmith**

Jim &amp; Teresa Covington

Douglas Flint

Sandra &amp; Joseph Urban

**James Frank Hammett**

Karen Hammett

**Pamela Hathcock**

Michele Hathcock

**Dr. Hilda Heidingsfelder**

Continental Divide Estates

Helen Ullrich

Elizabeth Wilson

**Landon Roberts Henry**

Jennifer &amp; Clay Ballantine

Field Coxe &amp; Florence Henry

Kate &amp; Roger Henry

Jocelyn Reese

**Adele Hewitt**

Benton &amp; Rebecca

Montgomery

**Bruce & June Hicks**

Penny Conners

**Brian Hirsh**

John &amp; Kristin Gibson

**John H. Holden, Jr. & Sue Marion Holden**

John &amp; Denise Holden

**Dennis Lee Hollis**

Patricia Brown

Vivian Fraley

Fred &amp; Gloria Nichols

Jewel Nixon

**A. Linwood Holton**

Helen Fitzpatrick

**W.O. Hooper**

Richard Hooper

**Rosemary Hornak**

Eva Snapp

**Jim Howard**

Dan &amp; Linda Brown

**Elizabeth Hunter**

Janice Kagermeier

**David P. Ivey**

Laura &amp; George Ivey

**Jeffrey David Jack**

Vera Rooker

**Hal Jaus**

Victoria Jaus

**Dave Johnson**

Maxine Johnson

**Kenneth Johnson**

Judy Johnson-Paonessa

**Harley Jolley**

John Hough

**Kenneth Kaufman**

Joyce &amp; Roger McNeil

**Steven Michael Keisling**

Anonymous

Katy Apostolides

Mary Cann

CapTech Consulting

First Christian Church

Wendy Greene

Charity Hodgins

Fred &amp; Amy Karau

Laura McElligott

Tommy &amp; Debbie McKnight

Prissie Nguyen

Darrell Norton

Rohit Sharma

Lynne &amp; John Simeon

Joni Vincent

**Eddy M. Killete**

Lynn Killete

**Mary Killion**

Nancy McDonald

**Glenn & Gertrude Killon**

Jacqueline &amp; Donald Brooks

**Geraldine Kilpatrick**

Michele Hathcock

**Timothy D. Krumm**

John &amp; Martha Babinski

Cheryl Krumm

**Mary Joe Kulaga**

Sara Gray

**Roena & Petro Kulynych**

Kulynych Family

Foundation I, Inc.

**Fred W. Laffoon, Jr.**

Brenda C. Laffoon

**Gary Laney**

Debra Laney

**John David Langston**

Charles Adams

Nathan Andrews

Gretchen Burger

Nicole Cerami

Sally Drohan

Gayle &amp; Bob Fitzgerald

Martha Knisley

Phillip Massengill

Kathy Matis, Pancha Morales &amp;

Eli Muniz

Janet Molinaro

Cynthia O'Grady

Robert Overstreet

Kala Parker &amp; Ziya Gizlice

Paul &amp; Sara Reynolds

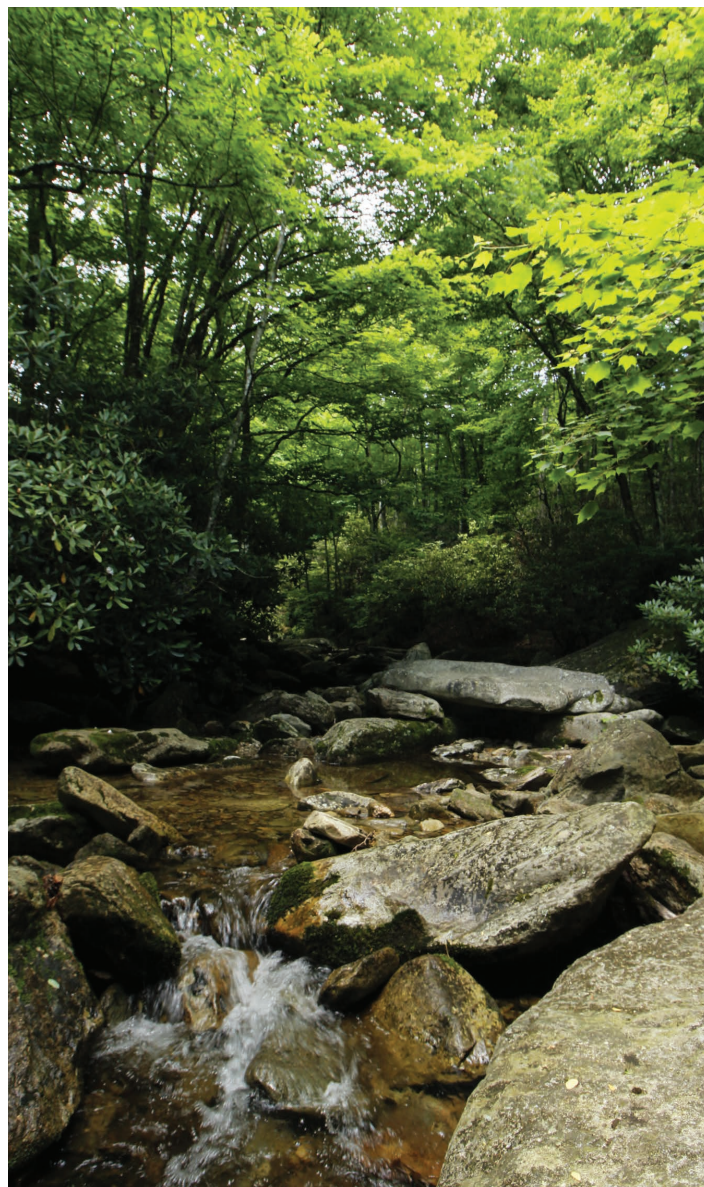
John &amp; Lynn Rybovich

Jill Scott

Robin Solomon

Philip &amp; Mary Ann Walzer

Elisa Wolper



Boone Fork Trail. Photo by Arianna Treppel

**Marianne Larson**

Carl Larson

**Bill & Blanche Lawson**

Sue &amp; Cesar Leon

**Kent & Iona Leatherman**

Neal Leatherman

**Stan Z. Lee**

Jennifer W. Lee

**Janet Lehman**

James &amp; Barbara Harrell

**L.L. Lewis**

Susan L. Hernandez-Starnes

**Robert Lindsey**

Damian Lindsey

**Harold Lloyd**

James &amp; Madeline Lloyd

**LeRoy George Lochner**

Barbara &amp; Roy Creasy

**Jackie Lookabill**

Daniel &amp; LaGena Greene

**Virginia Gilligan Loveland**

Gary &amp; Sherri Loveland

**Virginia Mann**

Renee &amp; Anthony Parker

**David A. Martinez**

Claire K. Melton

**Nancy "Nan" May**

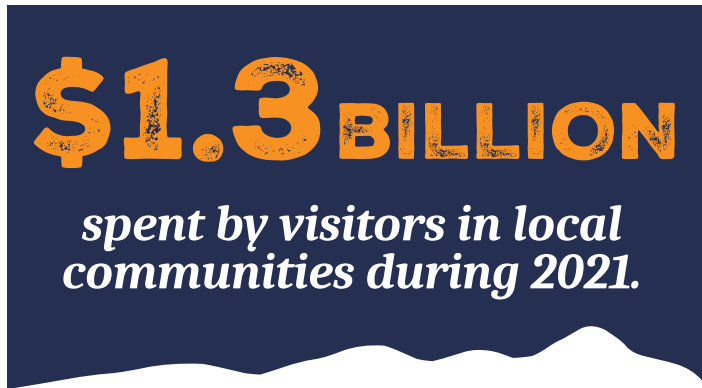
Gene May

**Beverley McCauley**

C. Edward McCauley

**Cameron McCormick**

Warren &amp; Judy McCormick



**Bob & Shirl McDonald**  
Tammie & Scott McDonald  
**Rose Goodman McDougald**  
Lisa & Andrew McDougald  
**John & Nelda McElrath**  
Marian & David Bell  
**John Kenneth McKiernan**  
Benton & Rebecca  
Montgomery  
**Norman McLane**  
Jim & Peg McLane  
**Mac & Marguerite McLawhorn**  
Dan McLawhorn  
**Ed McLeod**  
Elizabeth McLeod  
**Thomas Craig McMillan**  
Janett McMillan  
**Dennis Lee McNeil**  
Laura & Steve Blalock  
Mike & Leanne Brendle  
Patricia Corn  
Mike & Debbie Essic  
Judy Faw  
Donald & Linda Frey  
Sandy & Tom Habinck  
Jonathan Halsey  
Michael & Sandee Lawless  
Brynn Lewallen  
Jane McKim  
Katherine McNeil  
Stu Miller  
Wendy Miller  
John & Anne Morehead  
Robin & Russell Robertson  
Kathy Smith & Ron Rumberger  
Elaine Warshofsky  
Carol Westmoreland  
**Linda Medeiros**  
Manuel Medeiros  
**Jerome R. Mescher**  
Diane L. Mescher  
Linley Mescher  
Jodi Mescher  
**Jean & John Michael, Sr.**  
Nancy Michael  
**Joe Millard, Sr.**  
Sam & Andrea Honeycutt

**Jan Steward Miller**  
Anthony Verrecchio  
**Burwell Mills**  
Randy Mills  
**Gov. Dan K. Moore, Sr. &  
First Lady Jeanelle Moore**  
Brock & Melanie Moore  
**Thomas Daniel Moore**  
Anonymous  
Suzanne Amos  
Molly Barber  
Edward Braxton  
Greyson Brown  
Kris Brown  
Kim & Mike Burchell  
Jordan & Clint Calaway  
Gail Garbo  
The Gerrard Family  
Bob Gray  
Jennifer Hollandsworth  
Donna Hulcher  
Cindy & Carl Hutchins  
Janet Jones  
Teri Knight  
Justin Koechert  
Melissa & Bryan Lampley  
Adelia Smitherman Matthews  
Linda Maynard-Stephens  
F. Kenneth Moore  
Elise & Eric Nelson  
Laurie Ray  
Ray & Sandy Rhodes  
Richard Sawyer  
Cynthia Shaw  
Evelyn Spaulding  
Carolyn & Alan Ward  
Katherine Whitney  
Cathy & Michael Wright  
**Barbara Jean Moose**  
Miriam Jolly  
**Cynthia N. Morawski**  
Pamela Britton Kolb  
**Barbara Jean Morgan**  
Tom Morgan  
**Tedo & Nora Morrison**  
Eleanor Chamness

**Robert Murrish**  
Barbara Murrish  
**Tyler Myers**  
Crystal Myers  
**Charles Naeser**  
Nancy Naeser  
**Sherron Nash**  
Carey Marsh  
**Sonny Newman**  
Cory Martin  
**Dwight Nichols**  
Nan Van Hoy  
**Melanie S. Nitka**  
James E. Nitka  
**Robert Nowak, Sr.**  
Richard & Kelly Nowak  
**Debra Obenshain**  
Jimmy Obenshain  
**Charles E. O'Berry**  
Carolyn O'Berry  
**Robert Ohlen**  
Gudrun Ohlen  
**Howard & Wave Olson**  
David & Phyllis Benbow  
**Greg Onderko**  
Marcus Lee & Marla Sutton  
**Don Osborne**  
Virginia Osborne  
**Parents & Grandparents who  
instilled the love!**  
Penny Conners  
**Elizabeth Shelby Parker**  
John & Lynette Parker  
**Frank Parkhurst**  
Anita Henderson  
**All those who built the Parkway**  
Jessica Cleary  
**Raymond J. Pease**  
E. Sue Bernie  
David Drury  
Laura Pease  
**Mary Ann Peckham**  
Dan & Linda Brown  
**Harold "Rusty" Pedro**  
Connie & Jim Comis  
**Brooks Peeples**  
David Peeples  
**Robert Phillips**  
Linda Phillips  
**Phoebe Elizabeth Caudill Pruitt**  
Polly Pruitt  
**Robert H. Purdy**  
Richard & Sandra Purdy  
**Tony Rand**  
Jim & Shelia Deal  
**Jerry Rash**  
Maria & Buck Little  
**Albert & Edith Reems**  
James Schreiber  
**Lee Reynolds**  
Barbara Reynolds

**Mary Richardson**  
Gordon Richardson  
**Bob Rieser**  
Claudia Thomas  
**Eric Ritchie**  
James & Madeline Lloyd  
**Scott Ritter**  
George Ritter  
**Lark Roan**  
Jim McIntire  
**Chester Robertson**  
Allison Lawson  
**Penny S. Robertson**  
Randy L. Robertson  
**Clyde Robinson**  
Michelle & George Snead  
**Edgar Q. Rooker**  
Vera Rooker  
**Jack Clinton Rose**  
Karen Rose  
**Julia Rowe**  
Ken & Cindy Easter  
**Robert & Brenda Rumley**  
Lisa & Scott Rumley  
**James Rush**  
Mary Rush  
**Joan Savage**  
Janet Milborn  
**Sarah Scarborough**  
Sarah Scarborough-Perrault  
**William & Janice Schroeder**  
Nancy & Steve Zuk  
**Steven Schuster**  
Mary Anne Howard  
**Marvin Schwaeber**  
Sherry Cornell  
Susan Hearn  
Roddy & David Hurewitz  
Vicky Larkin  
Richard Letvak  
Karen & Kyle Martin  
Pat & Chris Mattern  
**Jim (James M.) Scott**  
Anne McKenzie  
**Andy Sessoms**  
Deborah Austin  
**Thomas Crane Sheffield**  
Susan Evans  
Kenneth Melcher  
Andrea & Tom Scheviak  
**Charles M. Shelton, Sr.**  
Ed & Dotti Shelton  
**Shirl William Shuck**  
Coy Adams  
Brent & Jill Andersen  
Betty Overton  
Barbara Polson & Family  
Carol Sasser  
Gregory Schneider  
Annette Stafira  
Renee Strnad  
Alexis & Brett Thompson



**Jane Ellen Simmons**

Kathleen Moore

**Nelson Simpson**

Nelson Harris

**Helen & Skip Skipper**

Julie &amp; Lee Skipper

**Chesterfield Smith, Jr.**

Patricia Smith

**Craig Stephen Snider**

Delilah Fortner

Judy Shomaker

**Margaret Pritchard Somers**

Albert Somers

**Colon "Sparkie" Sparkman**

Wilson &amp; Jonlyn Angley

Dan &amp; Linda Brown

Bill Butts

Verda Hennis

Morris Chapel United

Methodist Church

Wanda &amp; David Shinn

**Jewell Spinner**

Dan &amp; Linda Brown

**Alan Stahl**

J. Frank Papovich &amp;

Suzanne Jones

**Elizabeth Stahl**

Anne Farmer

**Lola Steelman**

Jack Steelman

**Jane & Paul Stephan**

Susan &amp; Paul Stephan

Gertrude Bohner

**Donald L. Stinnett**

April &amp; Larry Atwell

Leigh Christopher-Morris

John &amp; Vickie Csurny

Chad Hickey

Susan &amp; Don Parr

Sherri Ridenour

Ron &amp; Linda Ridenour

Mark &amp; Janet Tallent

**Tom Storey**

Deborah Storey

**Alvin A. Sturdivant, Jr.**

Shirley Sturdivant

**Donald "Don" Lee Suggs**

Anonymous

Donna Allen

Blue Ridge Garden Club of

North Carolina

Shirley &amp; Charles Bridger

Jean &amp; George Bridger

Connie &amp; Jim Comis

Beverly Dawson

Otis &amp; LaVonne Fisher

Susie Greene

Ben Johnson

Ingrid Kraus

Noyes &amp; Suzie Long

Rickey Family

Laurel Ryan

Rudy Shaw

Marilyn Smith

Bob &amp; Janet Stout

Don Suggs

Lane Walter

Beverly White

Nancy &amp; John Woolwine

**Raymond J. Sumser**

Ann McFadden

**T. Tyson Swain**

Judie Swain

**Marie Tarkovich**

Mike &amp; Christine Tarkovich

**William Delbert Teem**

Betty M. Gill

**James "Bill" Teer**

Susan Lambert

**Colin Thomas**

Pam &amp; Maurice Thomas

**Steve Thomas**

Catherine Dooley

**Roy Thompson**

Arlene Edwards Thompson

**John Tiernan**

Claire Tiernan

**Dr. CR Titus**

John &amp; Beth Titus

**Mary Otelia Travis**

Glenn Travis

**Eric Nicholas Underwood**

Juli Underwood

**Marie Vickers**

Frances &amp; Matt Riley

**Mark Viets**

Alexa Viets

**Edward Wayne Waddell**

Mary Jones

Diana &amp; Traylor Renfro

**Buddy Walker**

Ernest Walker

**Carl Walker**

Ken Fennell

Ron &amp; Tricia Wells

**Eric Weigel**

Pam Alexander

Cynthia Collier

Larry Weigel &amp; Jayne Anderson

**Dot & Hubert Weir**

Perry &amp; Nancy Weir

**Barry Werninck**

Kirby &amp; Gloria Werninck

**Karen Whelehan**

Karen &amp; Bill Tait

**Helen White**

Mary Allen

**Andrew Newton Wiegner, Jr.**

Karen &amp; Gary Wiegner

**Harry & Eudora Williams**

Sharon &amp; Thomas Parsons

**Chris Wilson**

Scott Krueger



*"I chose my personalized license plate QUILT because after retiring from dentistry, my husband and I moved to these beautiful mountains and I opened an Etsy shop featuring quilts. I love quilting, and I love these Blue Ridge Mountains! It's a perfect match!"*

- Debbie Spraker, N.C. Parkway plate holder

**Don Wilson**

Don Wilson Builders, Inc.

**Kathleen Wilson & Billy Pelham**

Suzanne Wilson-Desiato &amp;

Eugene Desiato

**Roger, Marilyn & Bob Winters**

Sharon Winters &amp; Kendall Reid

**Scott T. Witty**

Buddie Wetli

**Shannon Wayne Wood**

Anonymous

Margaret &amp; Dave Albert

Betty Anderson

Lori Anderson

Ellen Compton

Robert &amp; Carey Emmich

Sarah Fernald

Natalie Harzman

Paula &amp; James Petrey

Peggy Rottner

Dorothy Sackett

**John Woodruff**

Louise Law &amp; Rodney Pace

**Nancy Woods**

Jon Woods

**Carol Wooley**

Erin Rega

**Bland & Ada Worley**

Pamela Hollifield &amp; Scott

Montgomery

**Larrimore Wright**

Edward &amp; Kay Choplin

Lindsey Parker

Judy Rader

Chandler Rogers

**William J. Wyatt**

Matthew Wyatt

**Mr. & Mrs. Howard York**

Gary &amp; Jolene York

**Gail Young**

Alecia Sizemore

**W. Laurin Young**

Kenneth Young

*We make every effort to correctly record and display donor names, honors, memorials, and gift amounts. If an error is found in this report, please call Jordan Calaway at (866) 308-2773, ext. 245, or email her at [jcalaway@brpfoundation.org](mailto:jcalaway@brpfoundation.org)*

## GIVING BACK

# Thank you, volunteers!

We are so grateful for the many volunteers who have shared their time and talents to create a better Parkway and stronger Foundation. Over the years, they've shown their deep commitment by clearing trails and cleaning campgrounds, painting buildings, welcoming guests and sprucing up the grounds at the Blue Ridge Music Center, tending the hydrangea garden at the Moses H. Cone Memorial Park, spiffing up The Bluffs Restaurant for its spring openings, distributing brochures, attending community events, serving as advisors and trustees, and more. If you are interested in volunteer opportunities, visit [BRPFoundation.org/volunteer](http://BRPFoundation.org/volunteer).



*Students repair a trail at the Folk Art Center*



*Volunteers spruce up the Music Center campus*

*Volunteers clean and paint at Price Lake Campground*



*Pruning at the hydrangea garden*



*Teams collect debris at Doughton Park and clean The Bluffs restaurant*



## TAKE THE PARKWAY WITH YOU

# Specialty license plates

We are grateful to the thousands of North Carolina drivers who show their support for the Blue Ridge Parkway by purchasing or renewing their specialty license plates. In 2021, the North Carolina plate raised more than \$550,000 for enhancement projects and visitor programs. The regular specialty plate fee is \$30, and personalized plates are \$60. For each plate, \$20 helps the Foundation in our mission. An additional \$10 beautifies state highways through the DOT Wildflower Program.

Virginia drivers can now join their neighbors in North Carolina in supporting the Blue Ridge Parkway by preordering the commonwealth's own specialty license plate, which is slated to be on the road this summer. A portion of the \$25 plate fee will go toward key improvements within the national park, from trail repairs to historic preservation projects. You can also order a personalized plate for \$35.

To order the Parkway plate in your state, visit [GetThePlate.org](http://GetThePlate.org)



## PLATE CHAMPION

# Donald Green

After the launch of North Carolina's Blue Ridge Parkway vehicle license plate, Donald Green reached out to the Foundation to go about creating a version for motorcycles. Knowing that the plate would need hundreds of applications to get DMV approval, Donald distributed applications far and wide. Thanks to his efforts, motorcyclists across the state can show their support for the Parkway. Donald received the first plate and proudly sported #0001. After a life of adventure and exploration, Donald passed away peacefully on October 30, 2022. He made a lasting impact for the Parkway, a park he considered "one of the most beautiful places on Earth."



**Front cover:** *Spring flowers in the southern Appalachians. Photo by Dave Allen*  
**Back cover:** *Sunset over the Blue Ridge Mountains. Photo by Clark Wilson*